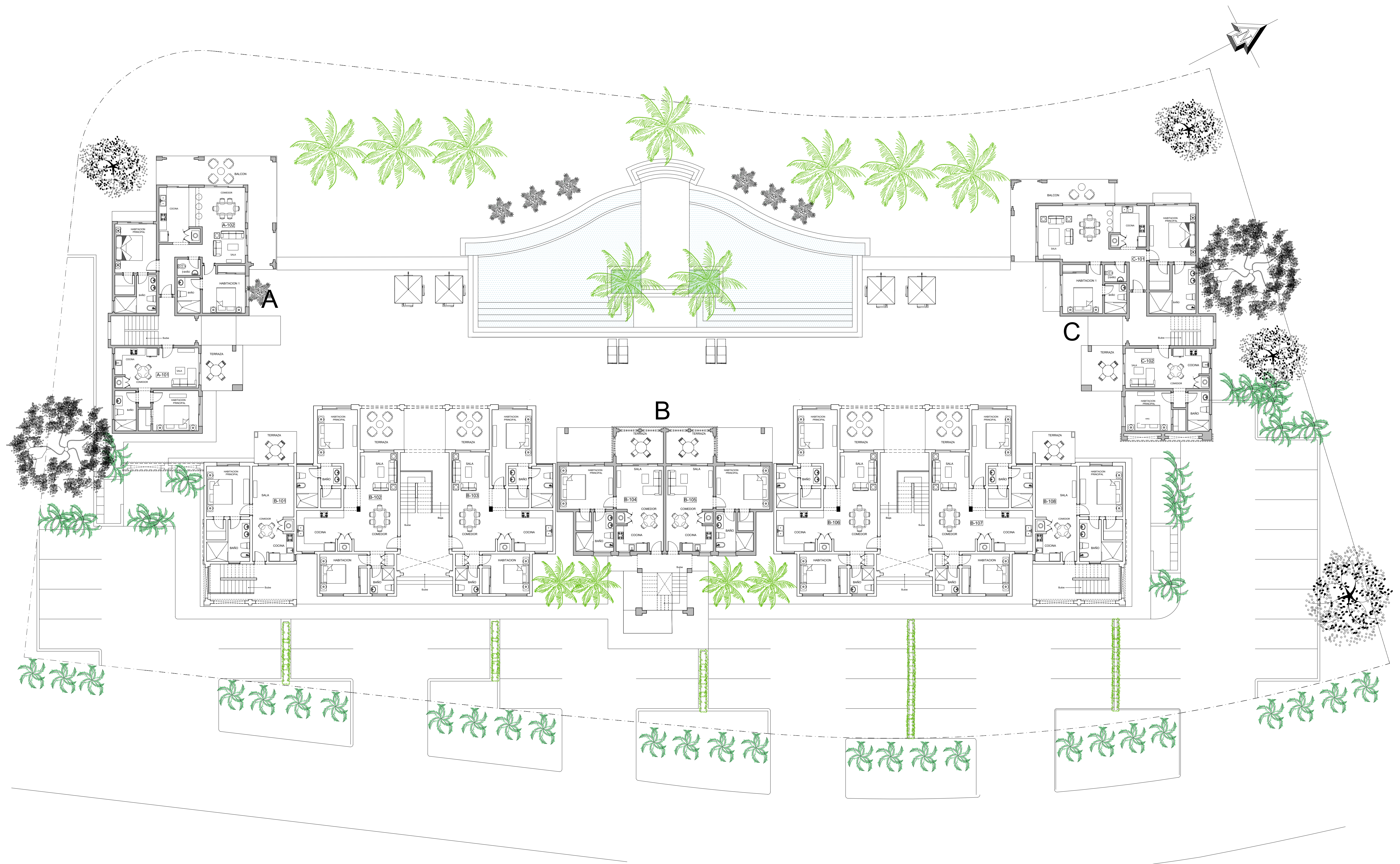


PLANO DE CONJUNTO

FASE 1-4



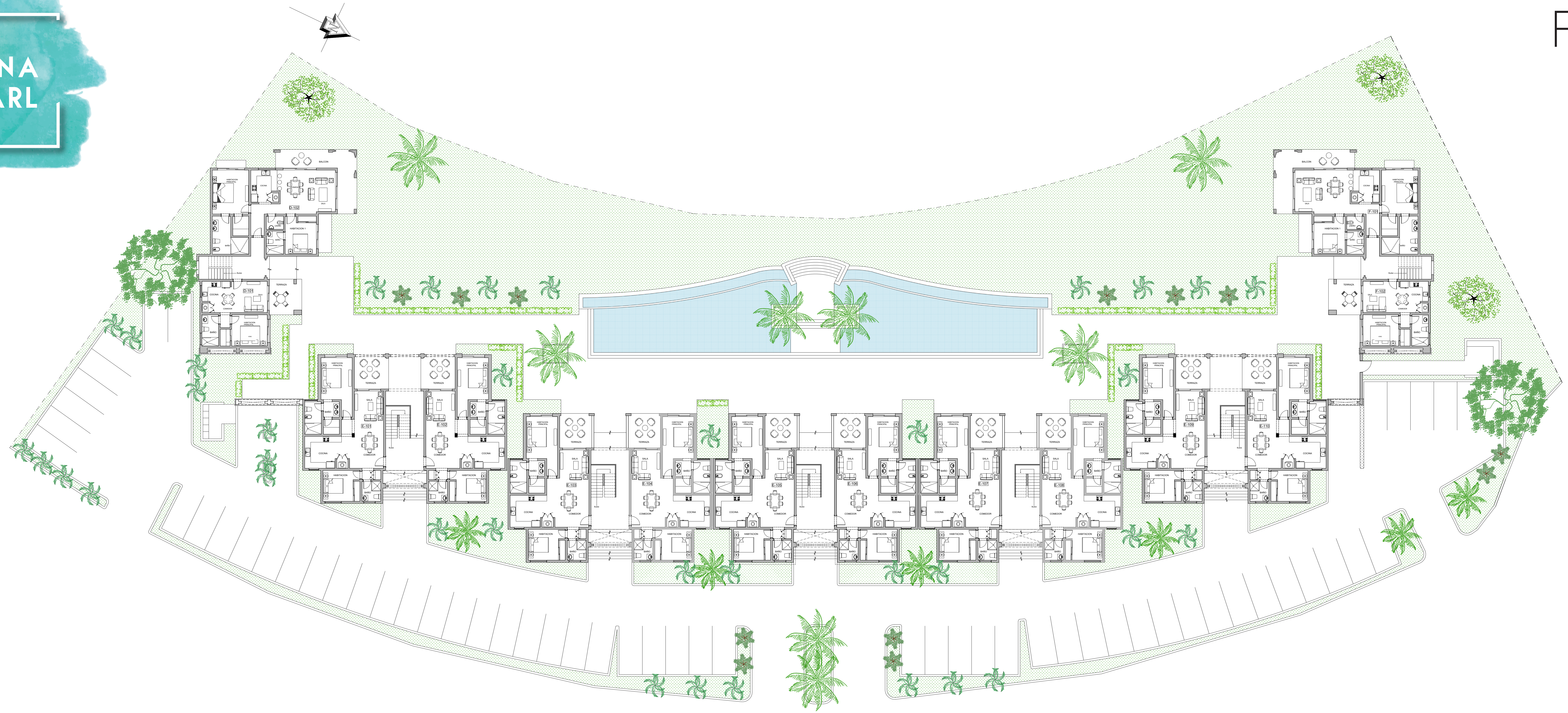
FASE I



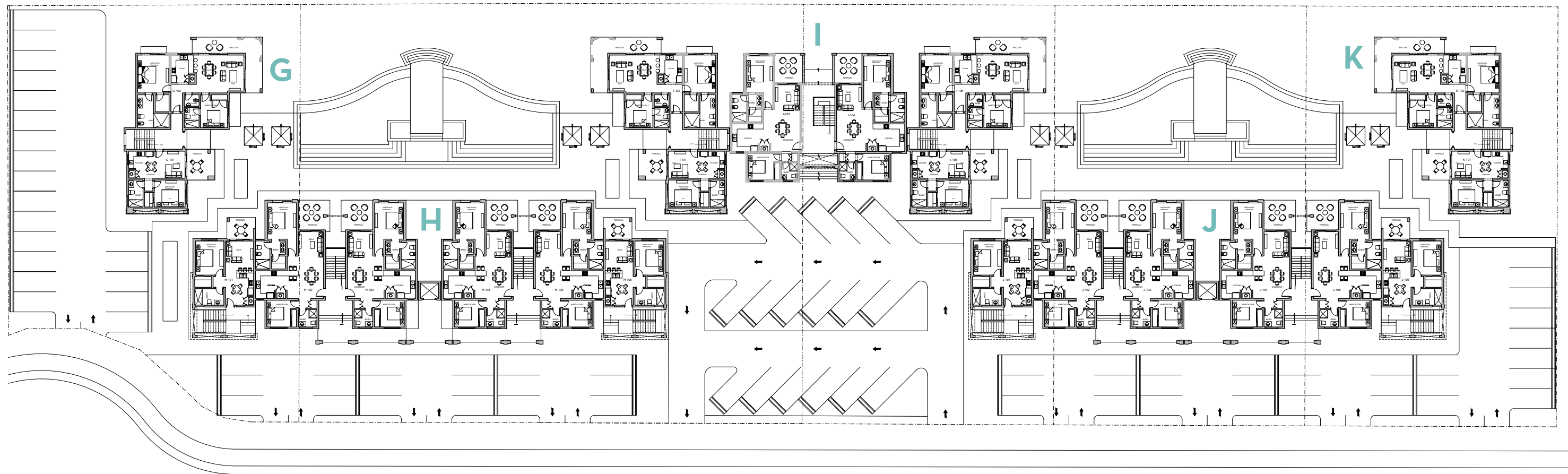
PLANTA DE PRIMER NIVEL



FASE II



PLANTA DE PRIMER NIVEL



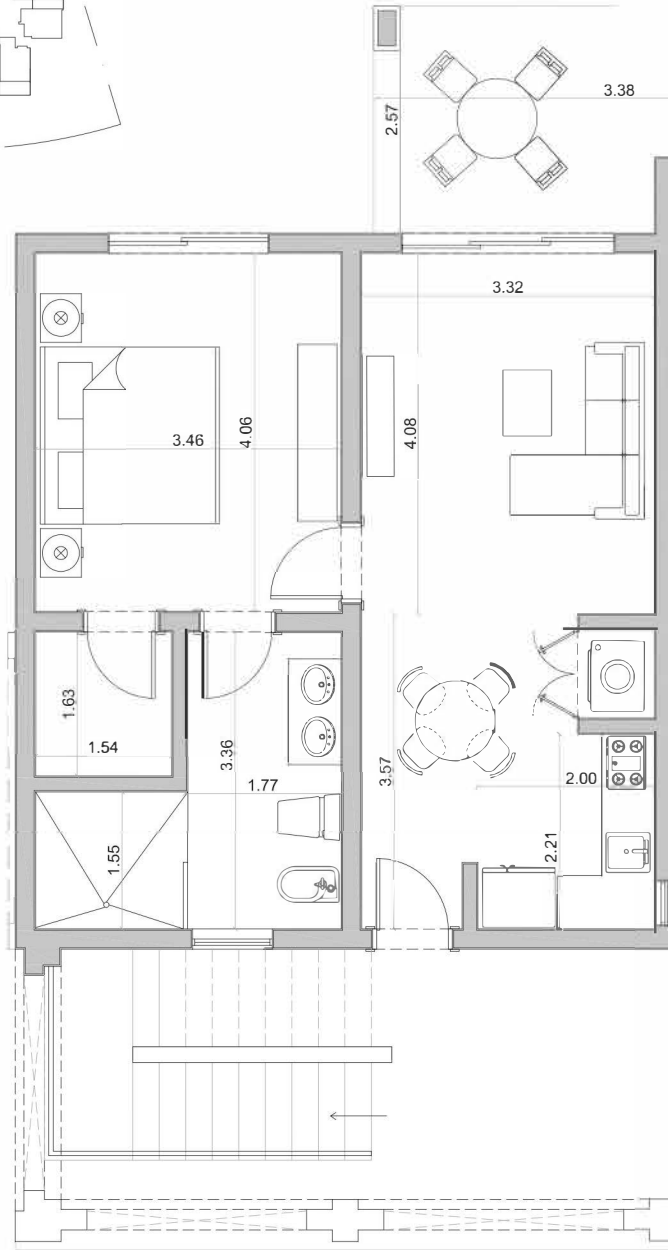
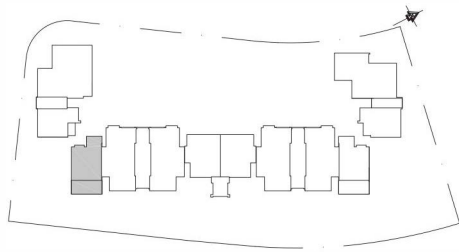
PLANO DE CONJUNTO
FASE 3 / PRIMER NIVEL



FLOOR PLANS

HARD ROCK | CANA BAY





APT TYPE 1

No. of Bedrooms 1

Total Area: 86.41m² - 929.77sqft

Fase 1 · Building B

UNIT

B101, B201, B301

Net Area

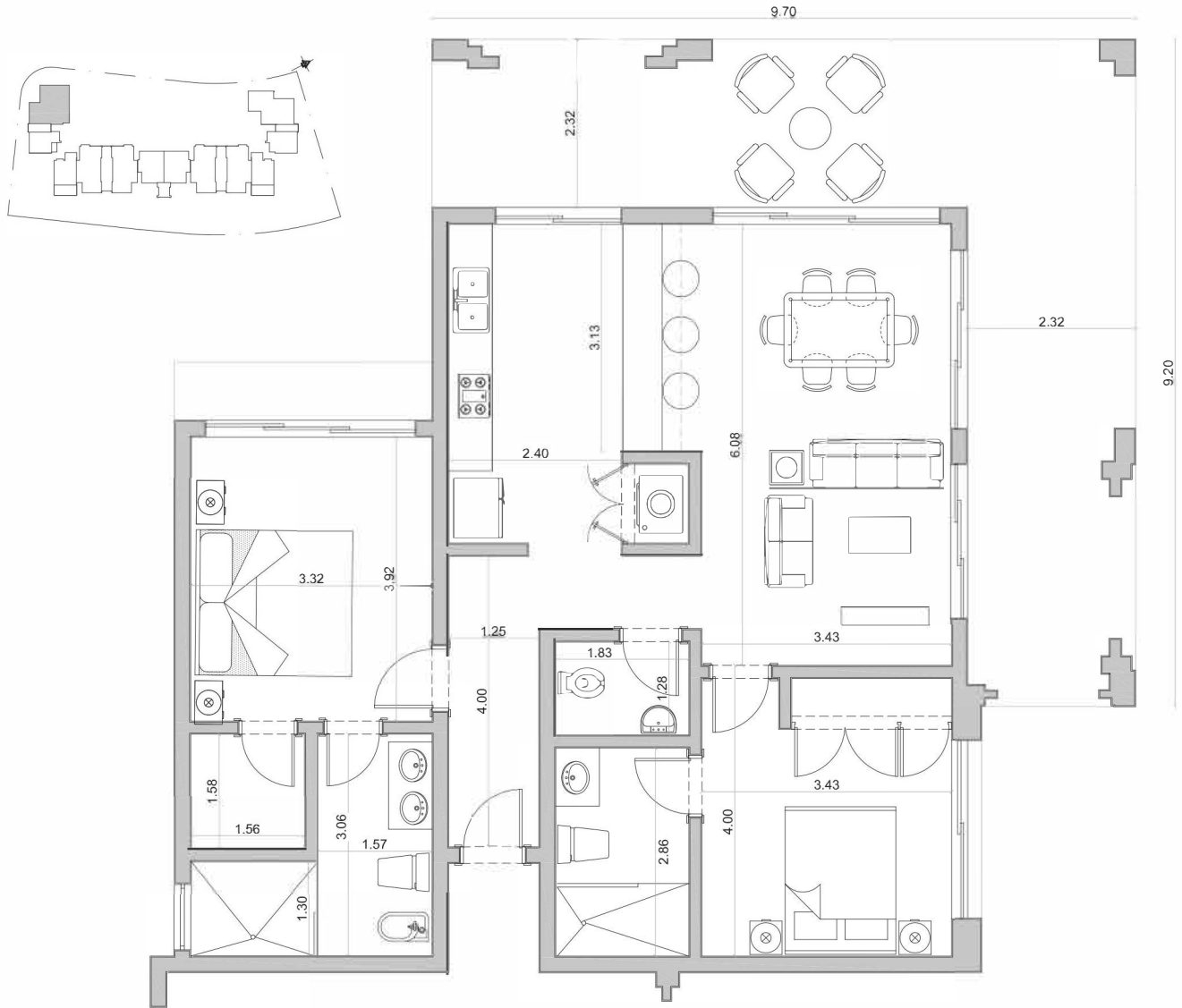
69.32m² - 745.88sqft

Common Areas

17.09m² - 183.88sqft

Total

86.41m² - 929.77sqft



APT TYPE 2

No. of Bedrooms 2

Total Area: 149.46m² - 1608.19sqft

Fase 1 · Building A

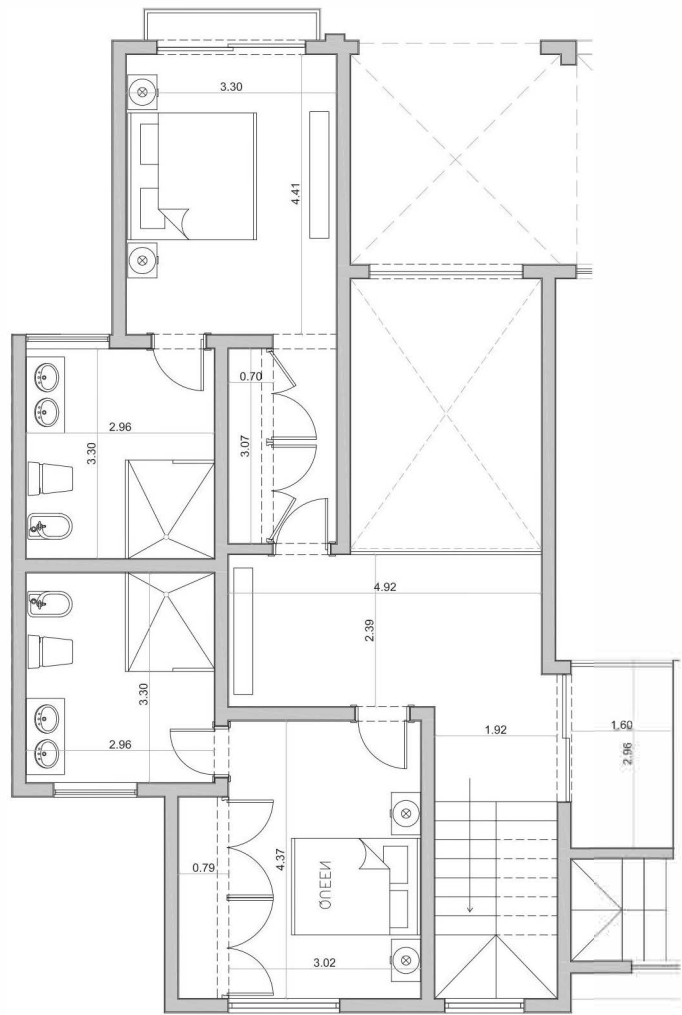
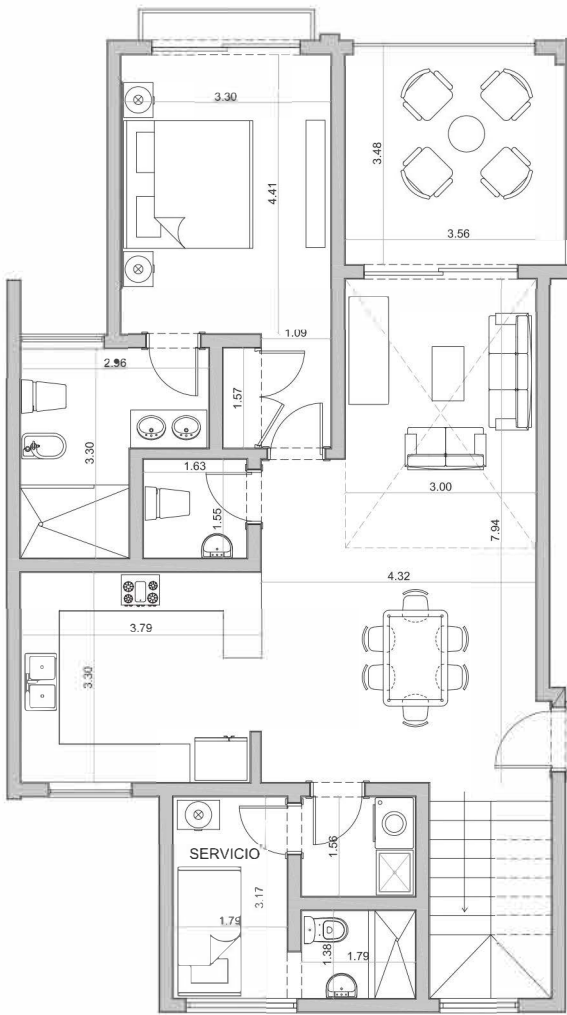
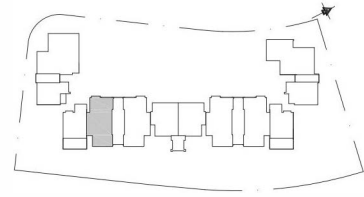
UNIT

A102

Net Area 142.80m² · 1536.53sqft

Common Areas 6.66m² · 71.76 sqft

Total 149.46m² · 1608.19sqft



APT TYPE 3

No. of Bedrooms 3

Total Area: 223.45m² - 2404.32sqft

Fase 1 - Building B

UNIT

Net Area

Common Areas

Total

B302, B306

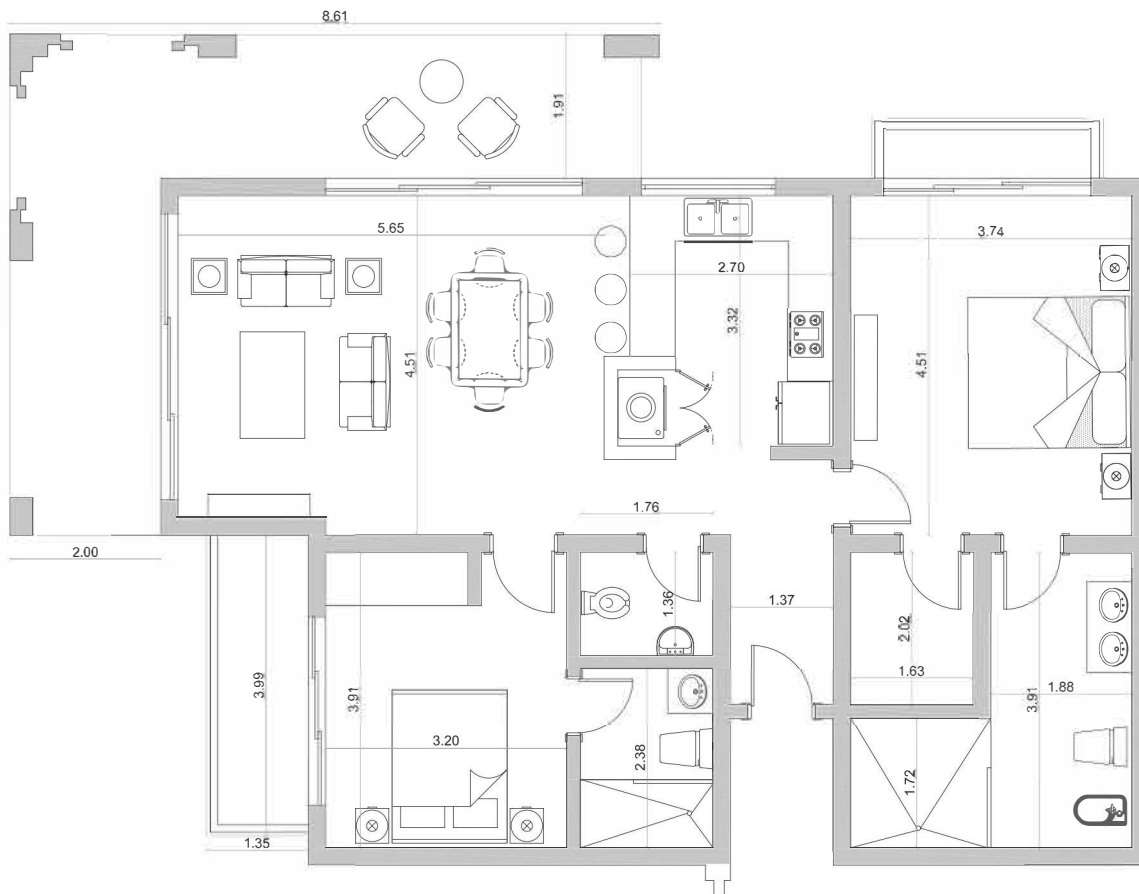
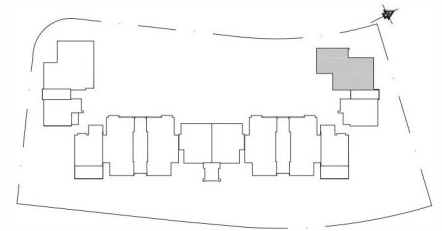
206.36m² - 2220.43sqft

17.09m² - 183.88sqft

223.45m² - 2404.32sqft



FLOOR PLANS



APT TYPE 4	UNIT	C101
No. of Bedrooms 2	Net Area	135.34m ² · 1456.26sqft
Total Area 142.57m ² · 1534.05sqft	Common Areas	7.23m ² · 77.79sqft
Fase 1 · Building C	Total	142.57m ² · 1534.05sqft

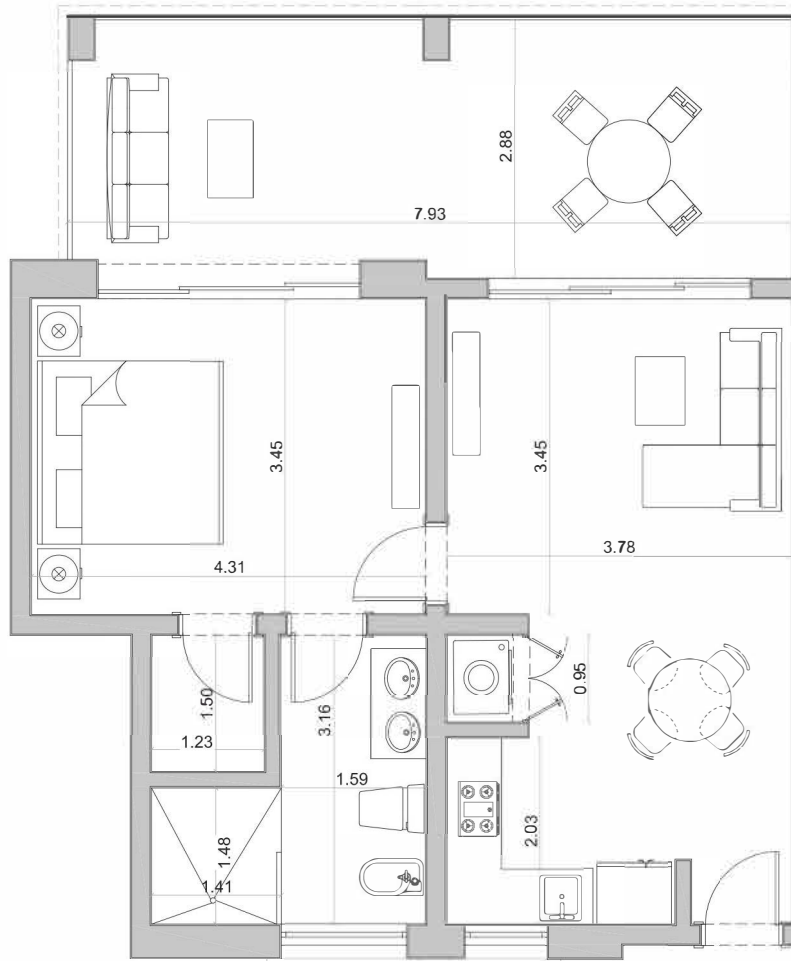
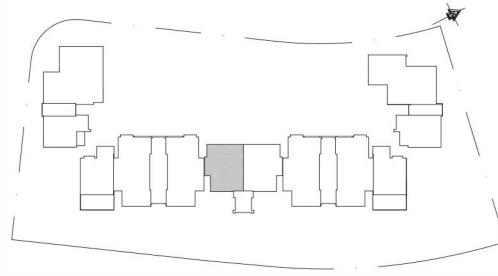


1. All materials, dimensions, and drawings are approximate only. 2. Information is subject to change without notice, at developer's absolute discretion. 3. Actual area may vary from stated area. 4. The developer reserves the right to make revisions/alterations, at its absolute discretion, without any liability whatsoever.

1. Todos los materiales, dimensiones y dibujos son solo aproximados. 2. La información está sujeta a cambios sin previo aviso, a discreción absoluta del desarrollador. 3. El área real puede variar desde el área indicada. 4. El desarrollador se reserva el derecho de hacer modificaciones / alteraciones, o su absoluta discreción, sin responsabilidad alguna.



FLOOR PLANS



APT TYPE 5

No. of Bedrooms 3

Total Area: 99.95m² · 1075.46 sqft

Fase 1 · Building B

UNIT

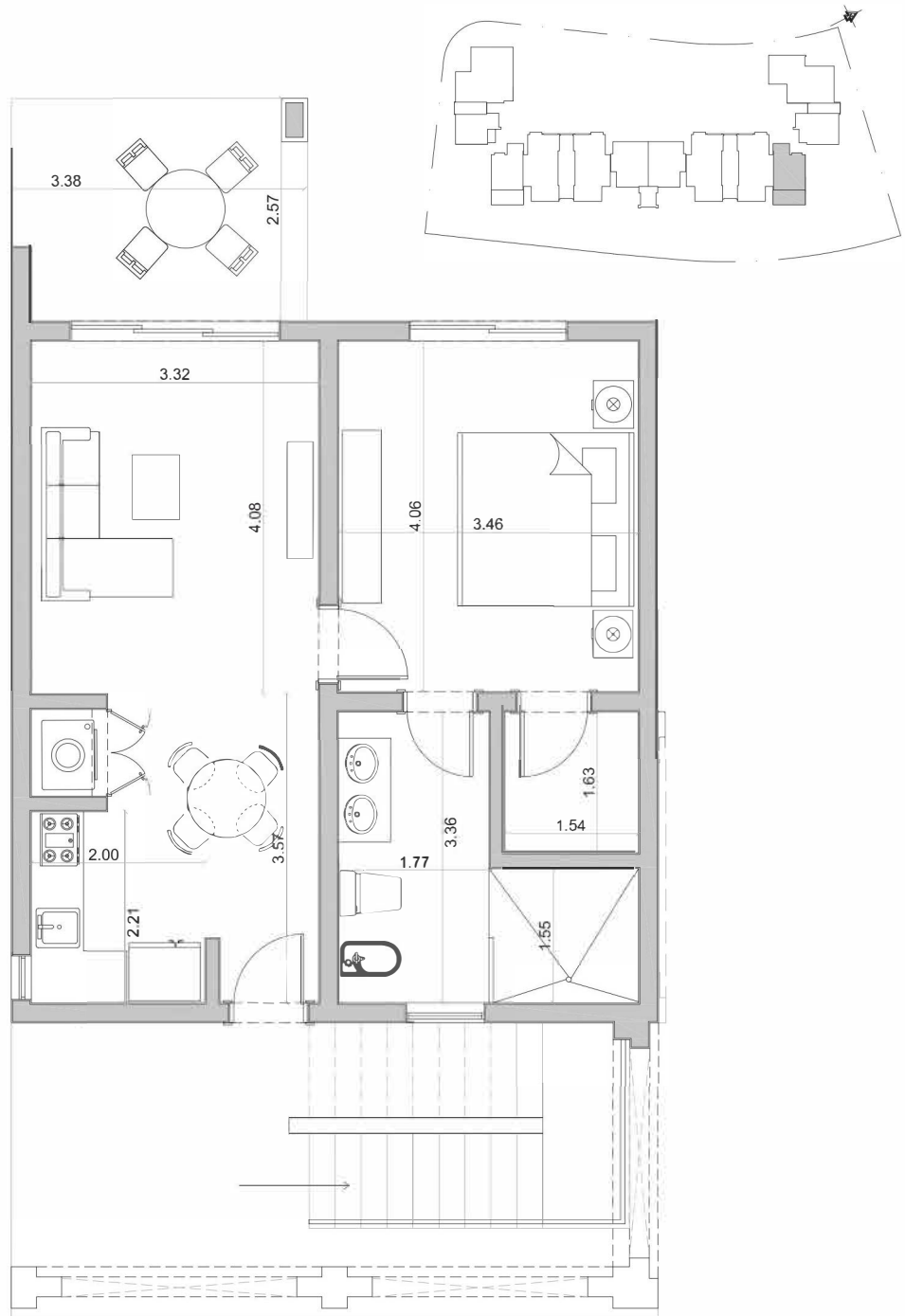
B304

Net Area	82.86m ² · 891.57sqft
Common Areas	17.09m ² · 183.88sqft
Total	99.95m ² · 1075.46 sqft



1. All materials, dimensions, and drawings are approximate only. 2. Information is subject to change without notice, at developer's absolute discretion. 3. Actual area may vary from stated area. 4. The developer reserves the right to make revisions/alterations, at its absolute discretion, without any liability whatsoever.

1. Todos los materiales, dimensiones y dibujos son solo aproximados. 2. La información está sujeta a cambios sin previo aviso, a discreción absoluta del desarrollador. 3. El área real puede variar desde el área indicada. 4. El desarrollador se reserva el derecho de hacer modificaciones / alteraciones, a su absoluta discreción, sin responsabilidad alguna.



APT TYPE 6

No. of Bedrooms 1

Total Area: 86.41m² · 929.77 sqft

Fase 1 · Building B

UNIT

B108, B208, B308

Net Area

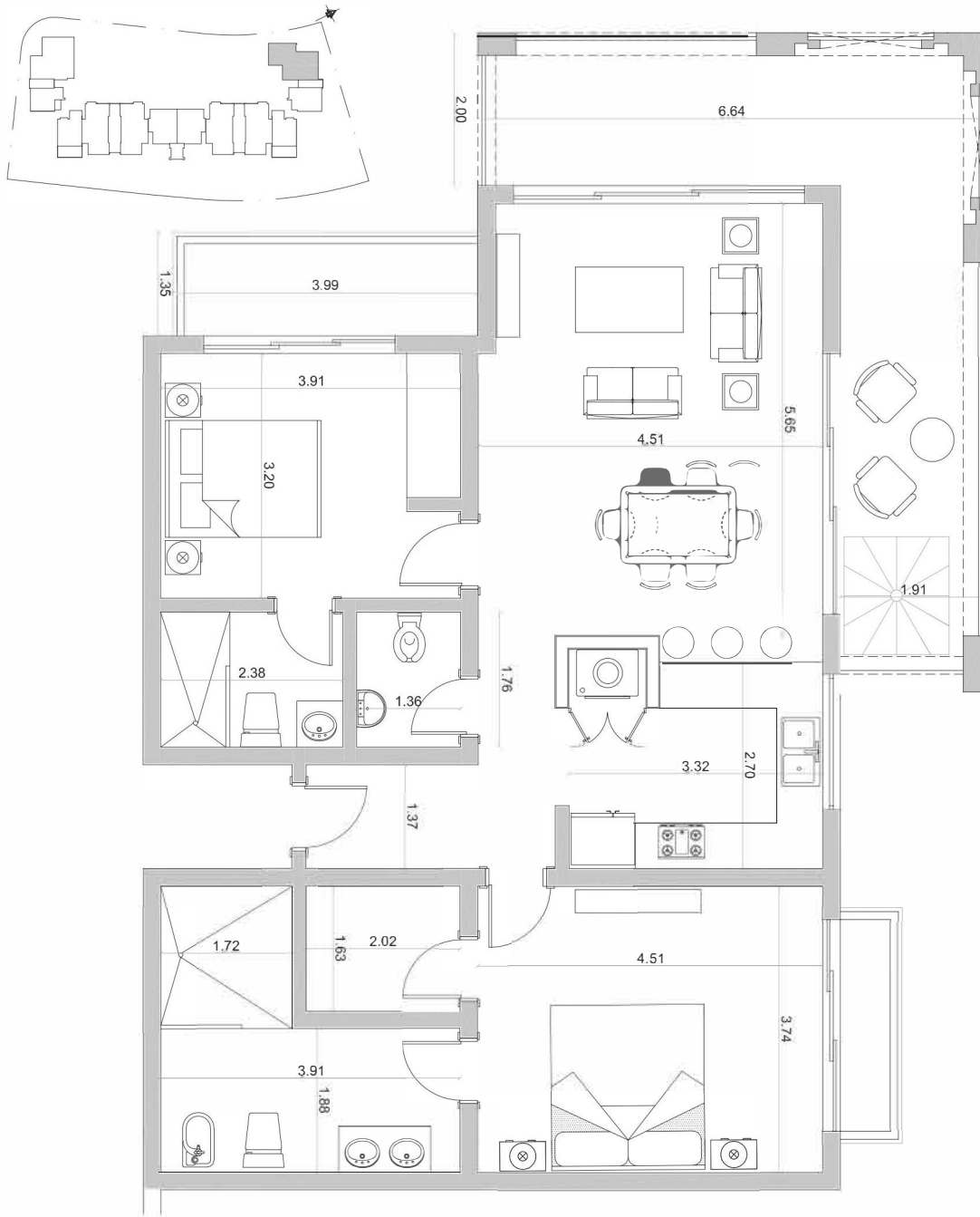
69.32m² · 745.88sqft

Common Areas

17.09m² · 183.88sqft

Total

86.41m² · 929.77 sqft



APT TYPE 7

No. of Bedrooms 2

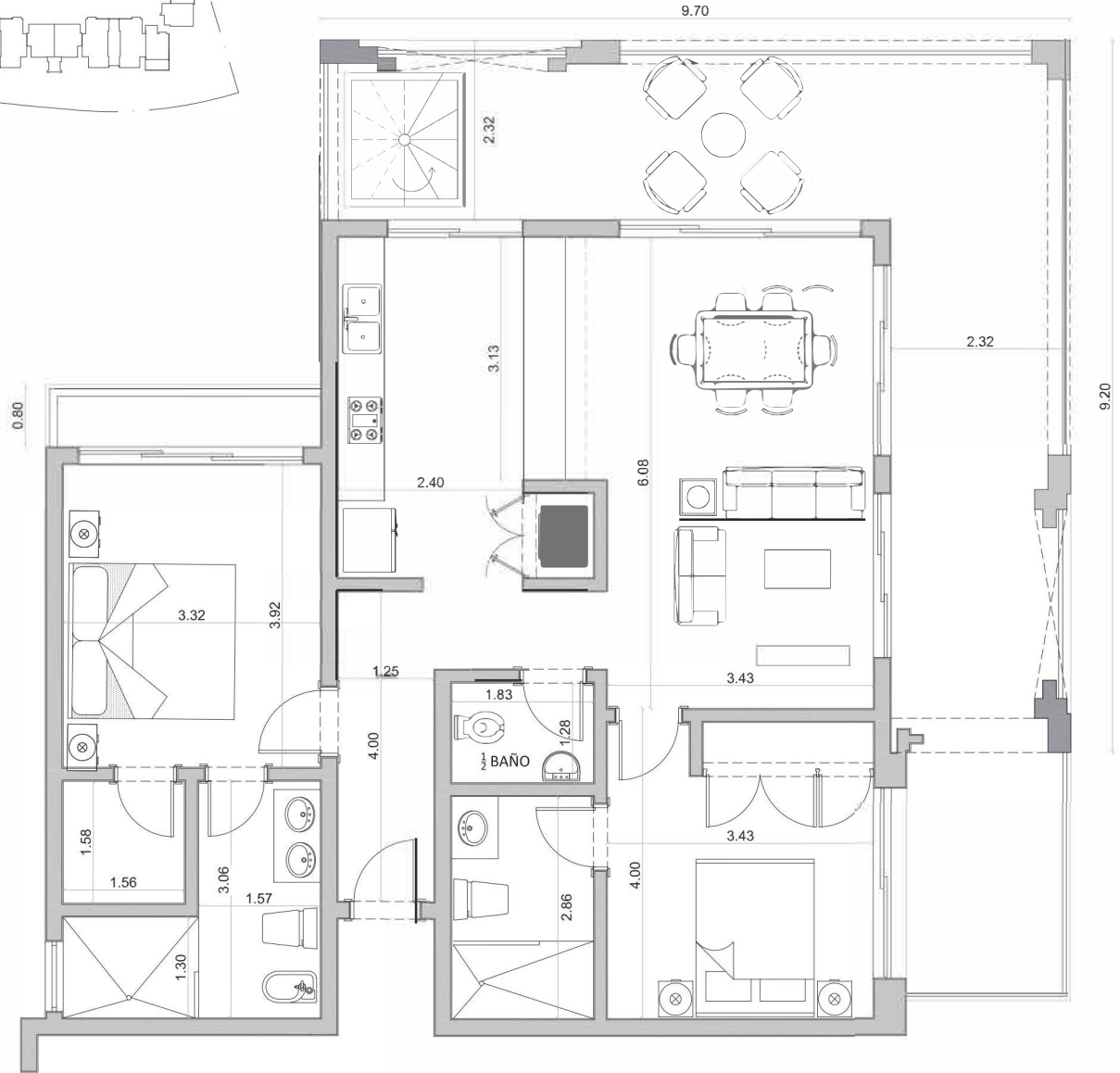
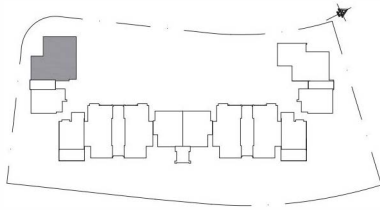
Total Area: 188.31m² · 2026.21sqft

Fase 1 · Building C

UNIT

C301

Net Area	133.11m ² · 1472.26sqft
Common Areas	7.23m ² · 77.79sqft
Roof Terrace	47.97m ² · 516.15sqft
Total	188.31m ² · 2026.21sqft



APT TYPE 8

No. of Bedrooms 2

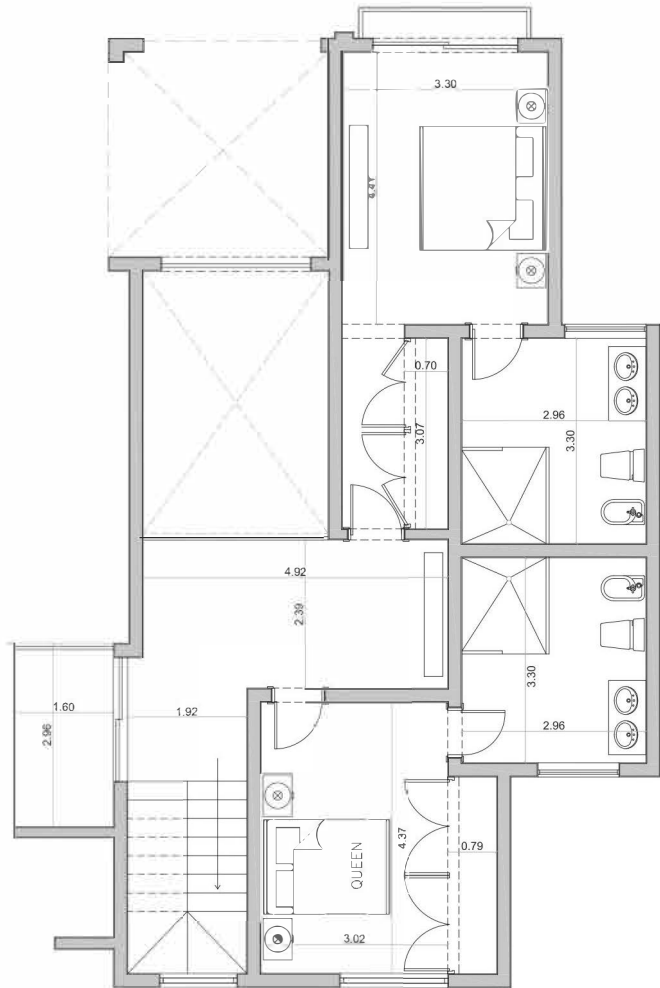
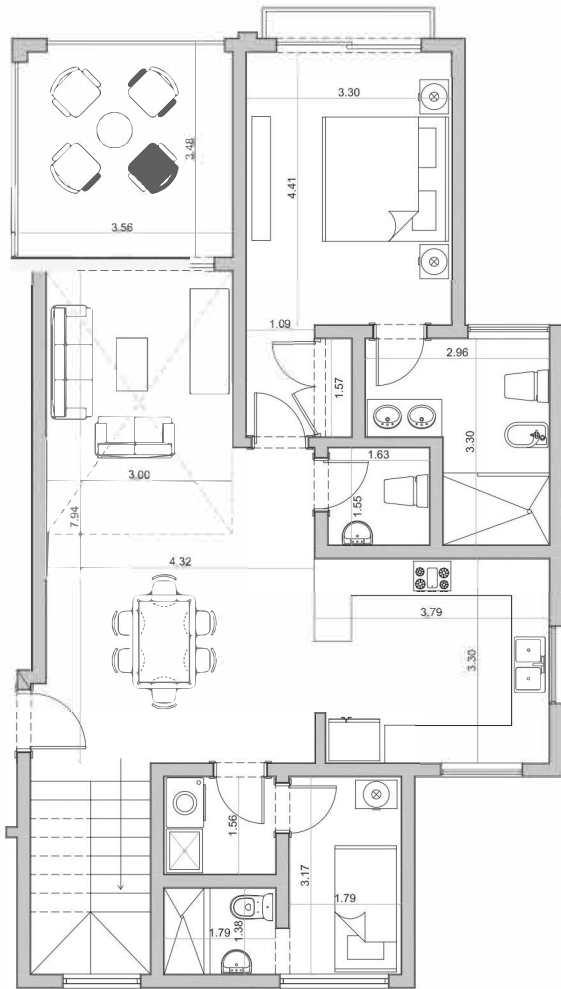
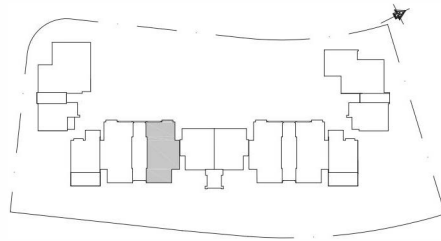
Total Area: 225.32m² · 2424.44sqft

Fase 1 · Building A

UNIT

A302

Net Area	141.48m ² · 1522.32sqft
Common Areas	6.66m ² · 71.76sqft
Roof Terrace	77.18m ² · 830.45sqft
Total	225.32m ² · 2424.44sqft



APT TYPE 9

No. of Bedrooms 3

Total Area: 223.45m² · 2404.32sqft

Fase 1 · Building B

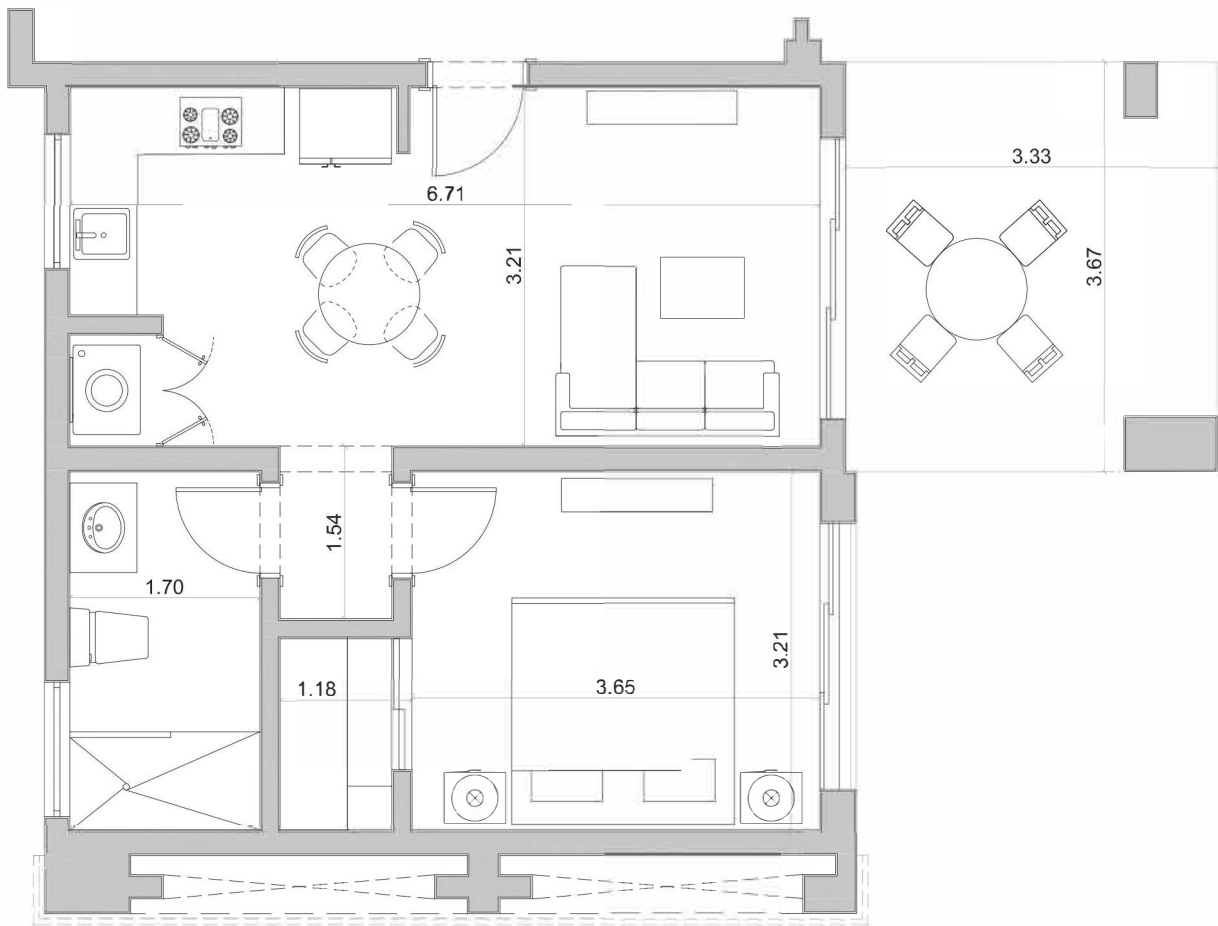
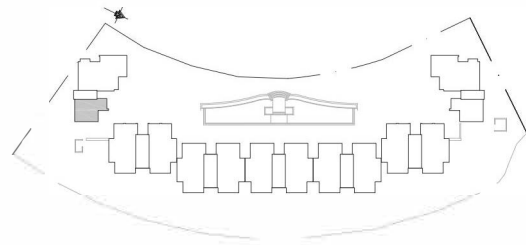
UNIT

B303,B307

Net Area 206.36m² · 2220.43sqft

Common Areas 17.09m² · 183.88sqft

Total 223.45m² · 2404.32sqft



APT TYPE 10

No. of Bedrooms 1

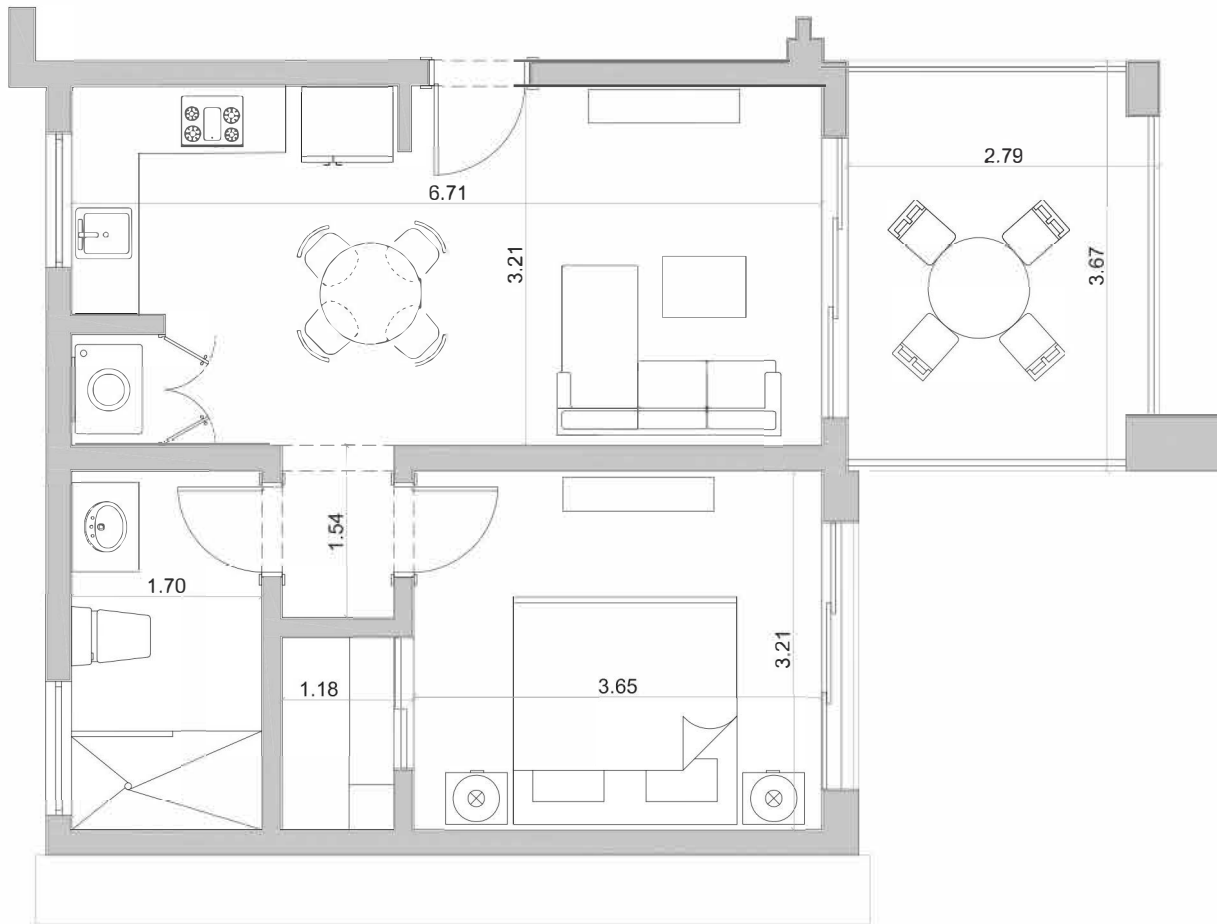
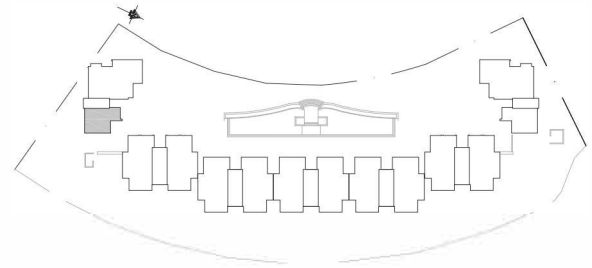
Total Area 70.87m² · 762.56 sqft

Fase 2 · Building D

UNIT

D101

Net Area	63.1m ² · 679sqft
Common Areas	7.77m ² · 84sqft
Total	70.87m ² · 762.56sqft



APT TYPE 11

No. of Bedrooms 1

Total Area, 69.17m² · 744.26sqft

Fase 2 · Building D

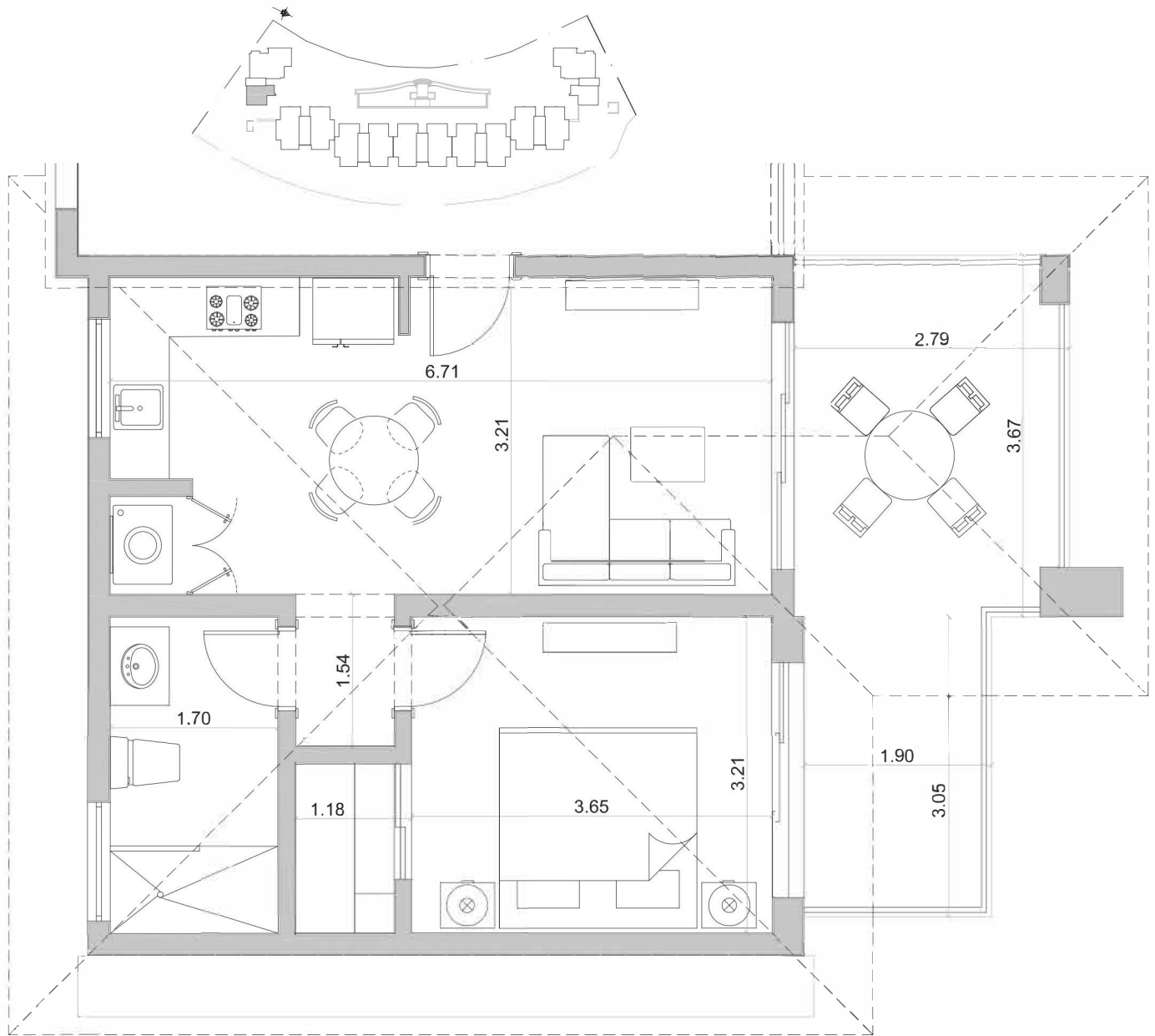
UNIT

D201

Net Area 61.4m² · 660.66sqft

Common Areas 7.77m² · 83.60sqft

Total 69.17m² · 744.26sqft



APT TYPE 12

No. of Bedrooms 1

Total Area: 74.65m² · 804 sqft

Fase 2 · Building D

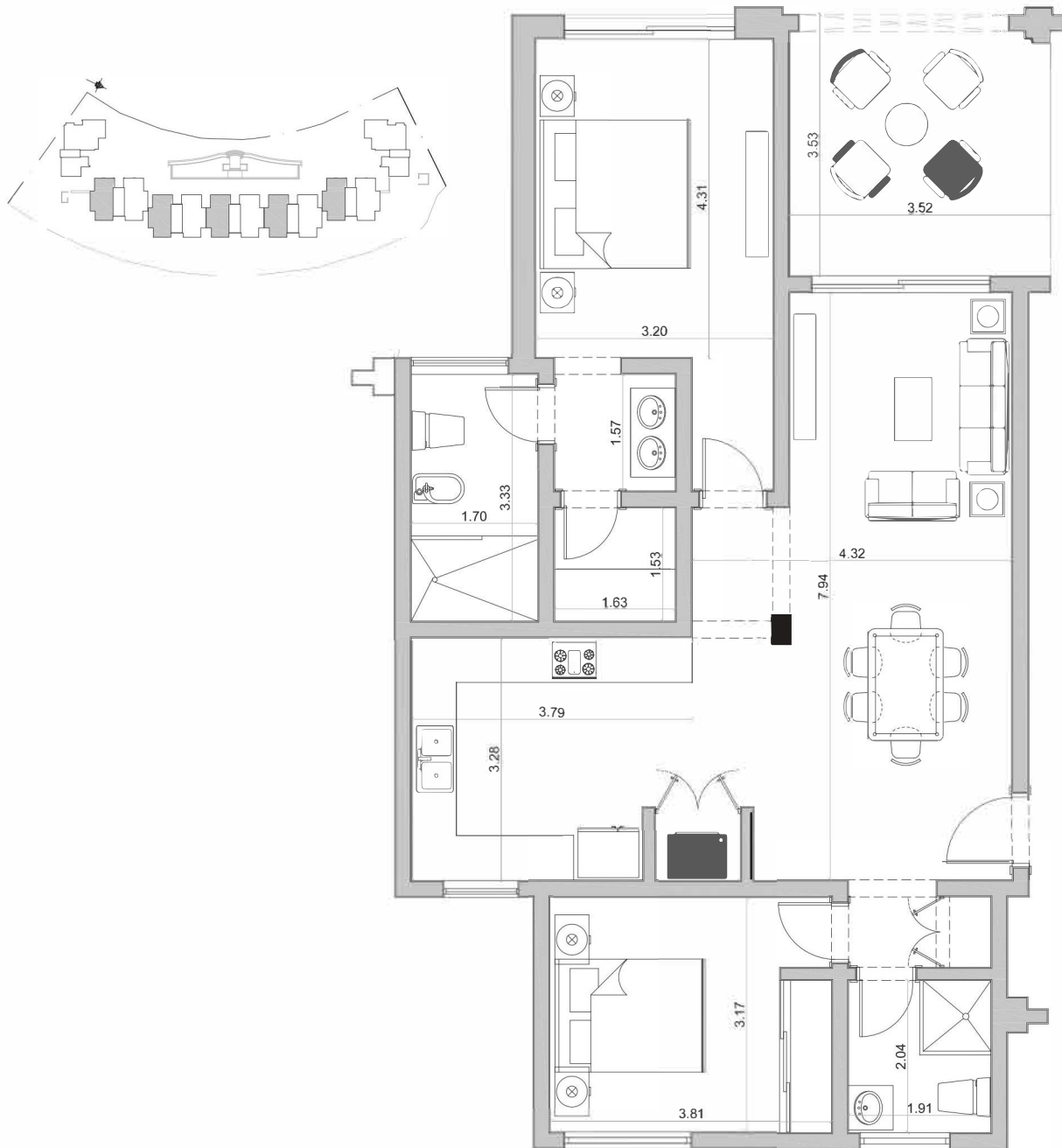
UNIT

D301

Net Area	66.88m ² · 720sqft
Common Areas	7.77m ² · 84sqft
Total	74.65m ² · 804 sqft



FLOOR PLANS



APT TYPE 13

No. of Bedrooms 2

Total Area: 128.52M² = 1382.87sqft
130.36M² = 1402.56sqft

Fase 2 • Building E

UNIT	E101, E103, E105, 107, E109	E201, E209	E203, E205, E207
Net Area	117.84m ² = 1267.95sqft	116.01m ² = 1248.26sqft	116.1m ² = 1248.26sqft
Common Areas	12.51m ² = 134.6sqft	12.51m ² = 134.60sqft	12.48m ² = 134.28sqft
Total	130.36m ² = 1402.56sqft	128.52m ² = 1382.87sqft	128.49m ² = 1382.55sqft

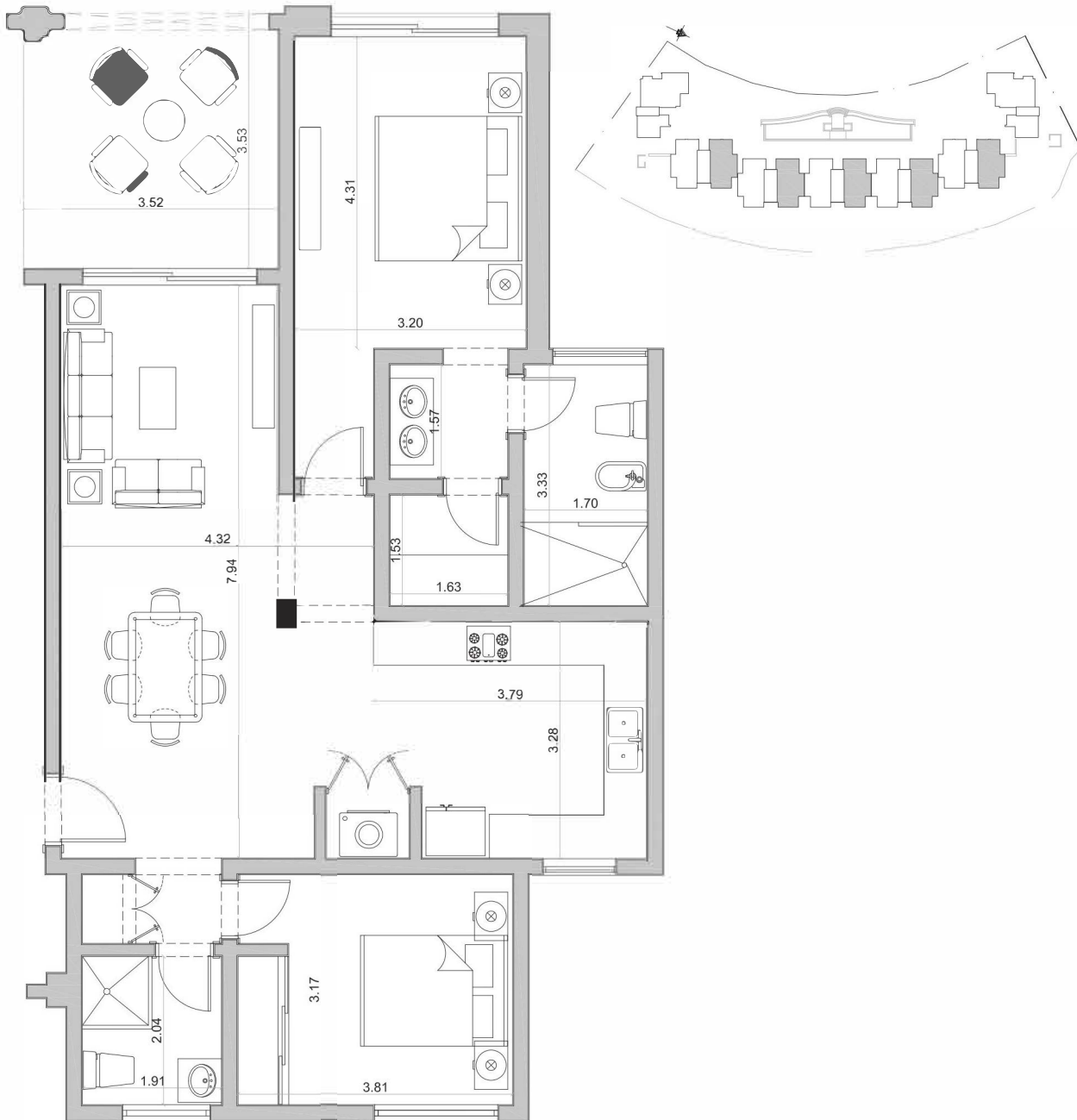


1. All materials, dimensions, and drawings are approximate only. 2. Information is subject to change without notice, at developer's absolute discretion. 3. Actual area may vary from stated area. 4. The developer reserves the right to make revisions/alterations, at its absolute discretion, without any liability whatsoever.

1. Todos los materiales, dimensiones y dibujos son solo aproximados. 2. La información está sujeta a cambios sin previo aviso, a discreción absoluta del desarrollador. 3. El área real puede variar desde el área indicada. 4. El desarrollador se reserva el derecho de hacer modificaciones / alteraciones, a su absoluta discreción, sin responsabilidad alguna.



FLOOR PLANS



APT TYPE 14

No. of Bedrooms 2

Total Area: 128.52M² = 1382.87sqft
130.36M² = 1402.56sqft

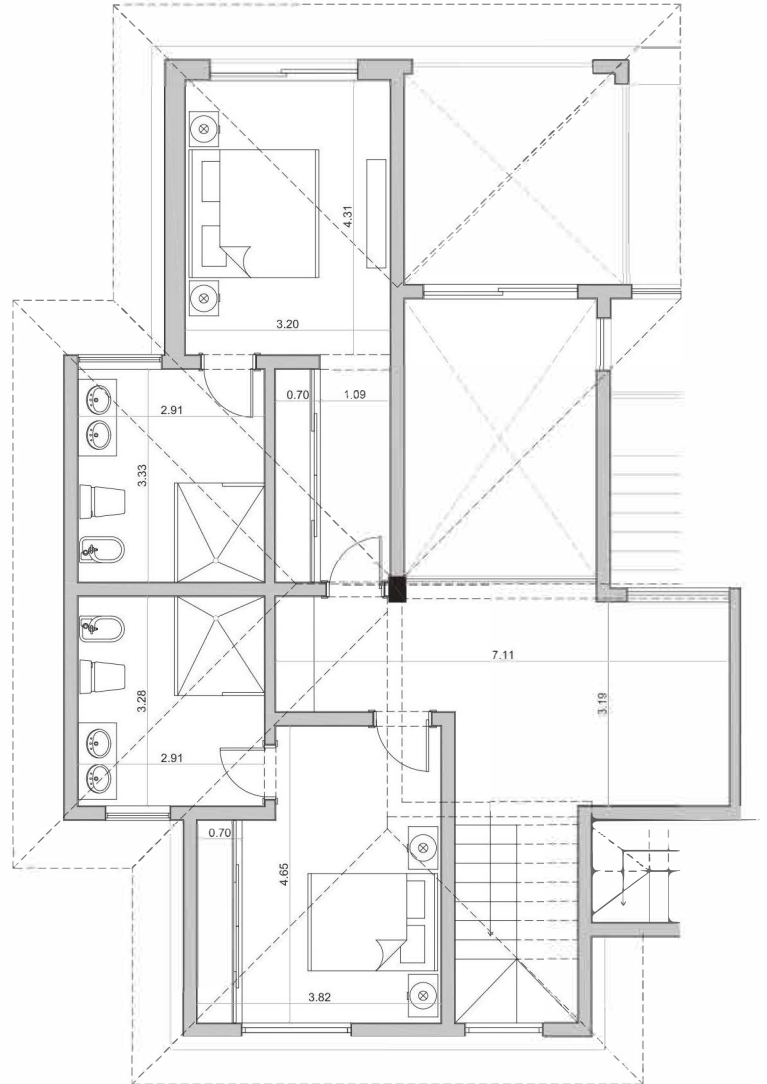
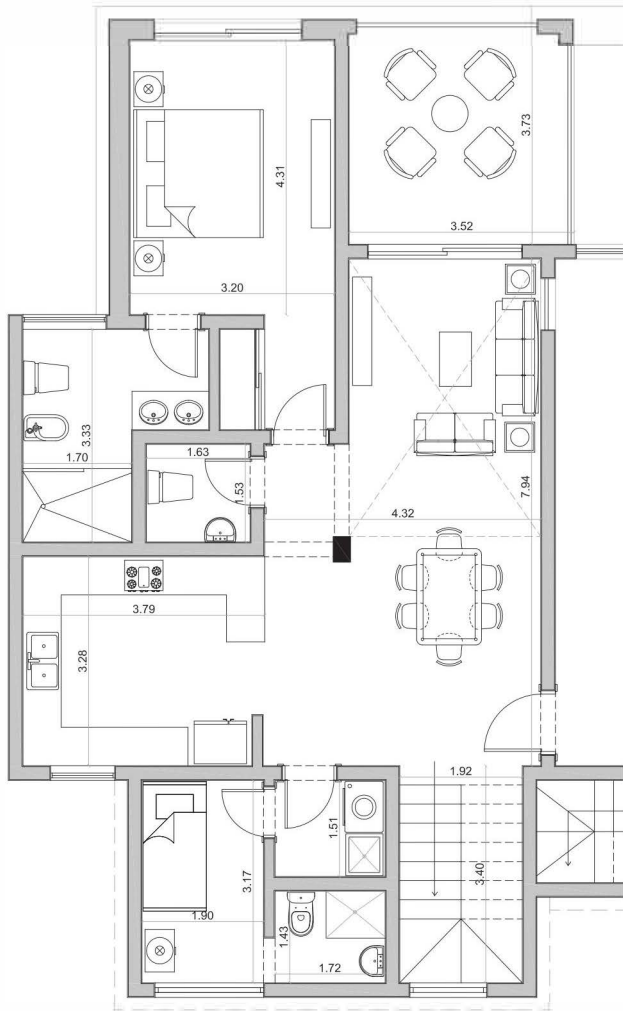
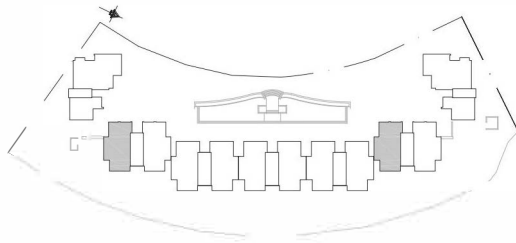
Fase 2 · Building E

UNIT	E102, E104, E106, E108, E110	E202, E210	E204, E206, E208
Net Area	117.84m ² = 1267.95sqft	116.01m ² = 1248.26sqft	116.1m ² = 1248.26sqft
Common Areas	12.51m ² = 134.6sqft	12.51m ² = 134.60sqft	12.48m ² = 134.28sqft
Total	130.36m ² = 1402.56sqft	128.52m ² = 1382.87sqft	128.49m ² = 1382.55sqft



1. All materials, dimensions, and drawings are approximate only. 2. Information is subject to change without notice, at developer's absolute discretion. 3. Actual area may vary from stated area. 4. The developer reserves the right to make revisions/alterations, at its absolute discretion, without any liability whatsoever.

1. Todos los materiales, dimensiones y dibujos son solo aproximados. 2. La información está sujeta a cambios sin previo aviso, a discreción absoluta del desarrollador. 3. El área real puede variar desde el área indicada. 4. El desarrollador se reserva el derecho de hacer modificaciones / alteraciones, o su absoluta discreción, sin responsabilidad alguna.



APT TYPE 15

No. of Bedrooms 3

Total Area: 218.87m² · 2355.04sqft

Fase 2 · Building E

UNIT

E301, E309

Net Area

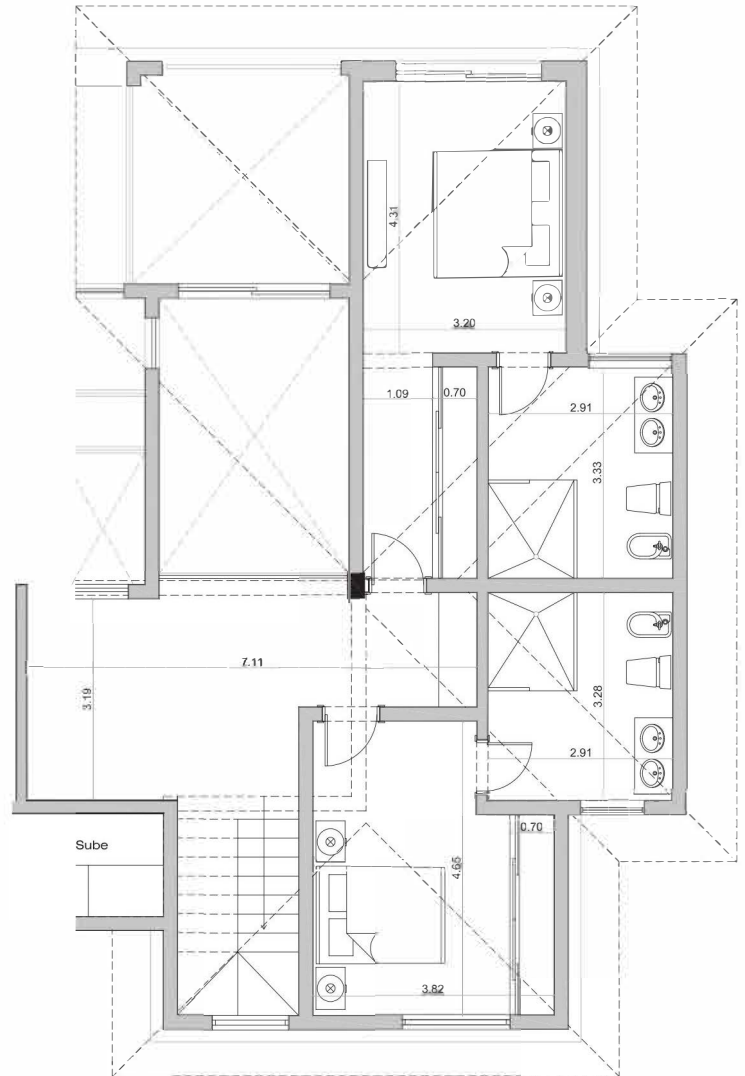
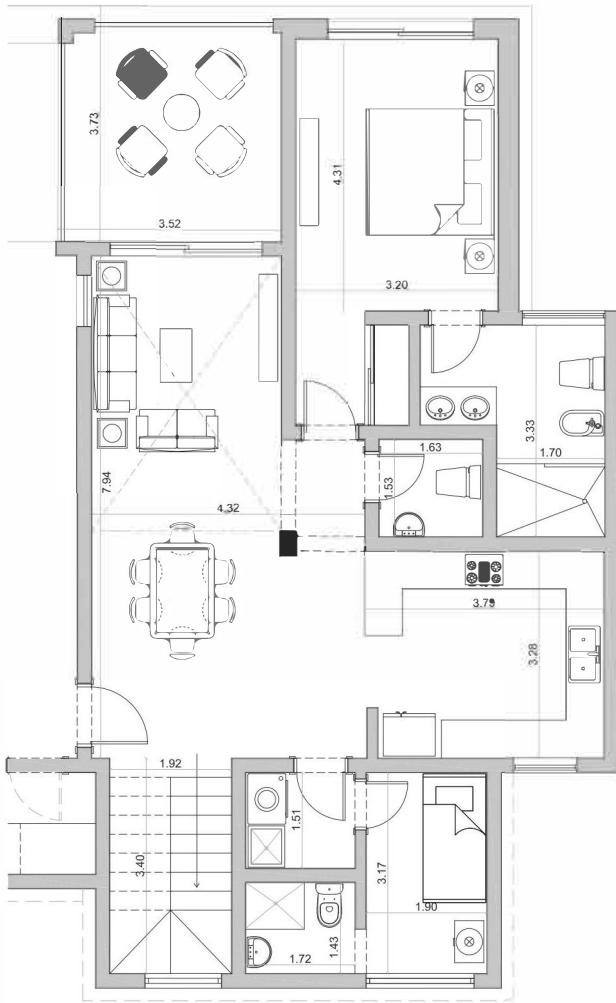
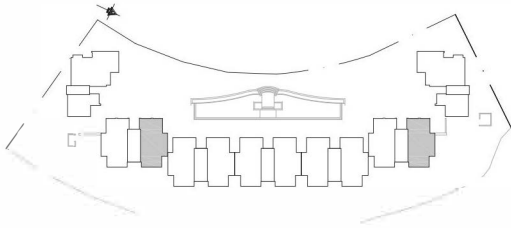
206.36m² · 2220.43sqft

Common Areas

12.51m² · 134.60sqft

Total

218.87m² · 2355.04sqft



APT TYPE 16

No. of Bedrooms 3

Total Area: 218.87m² · 2356sqft

Fase 2 Building E

UNIT

E302, E310

Net Area

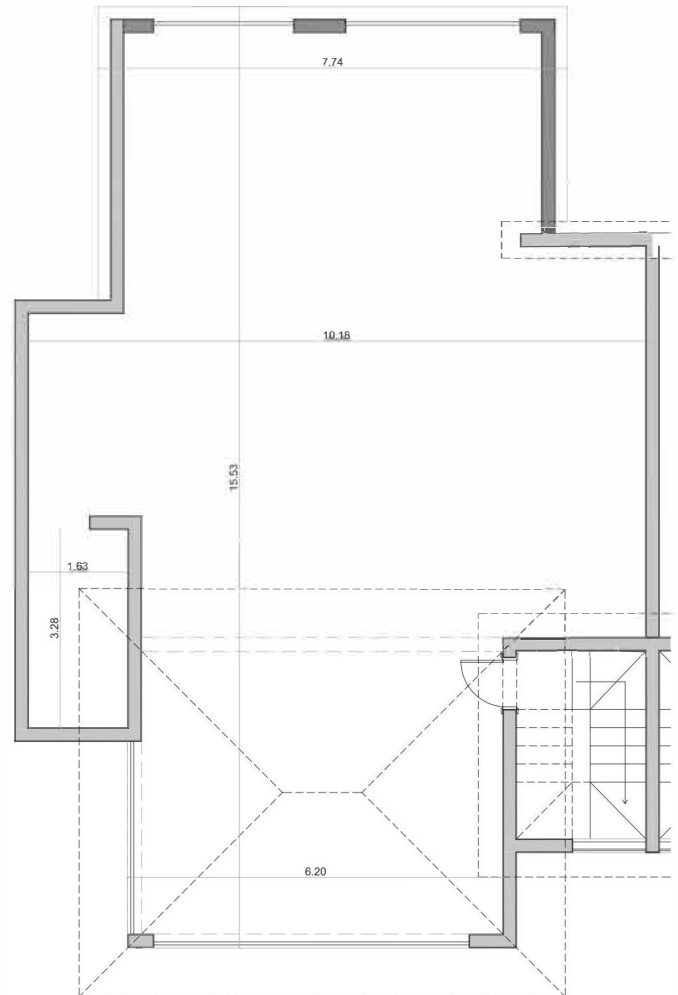
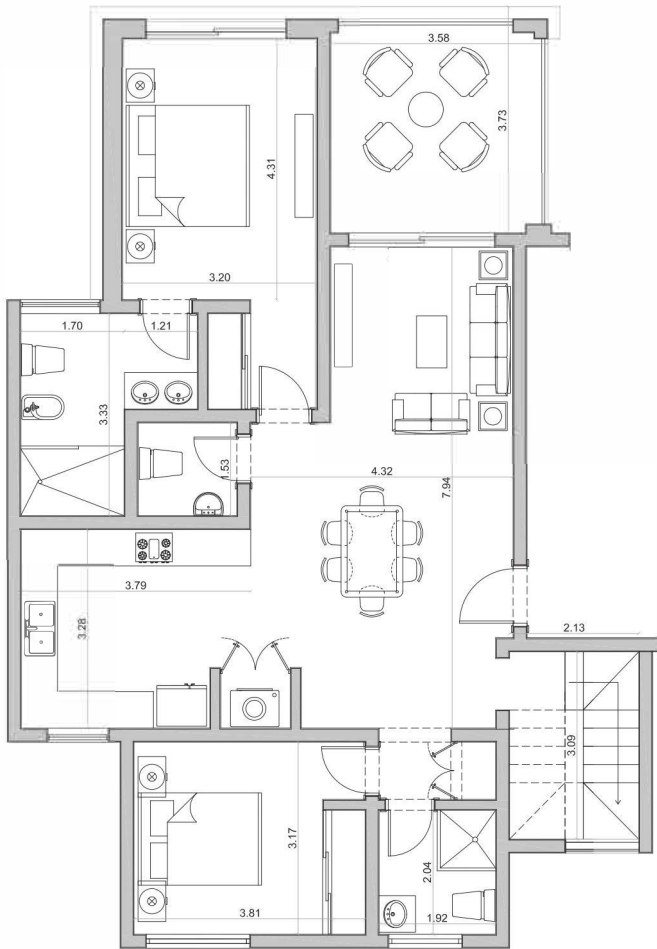
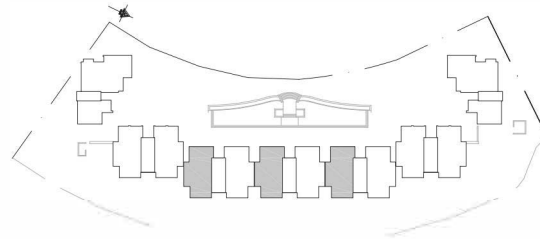
206.36m² · 2221sqft

Common Areas

12.51m² · 135sqft

Total

218.87m² · 2356sqft



APT TYPE 17

No. of Bedrooms 2

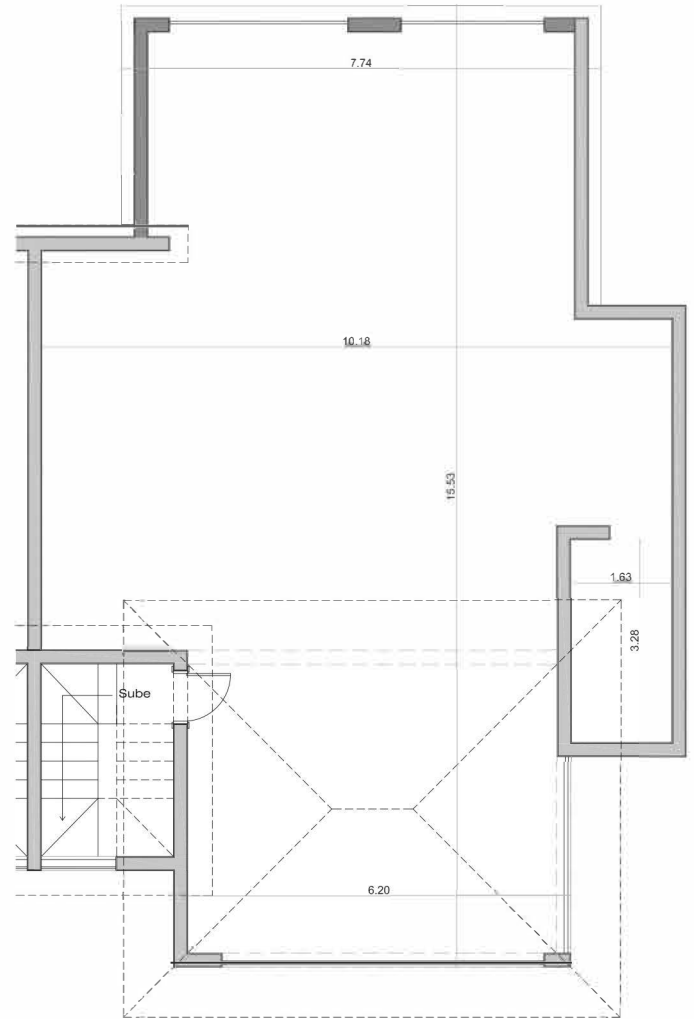
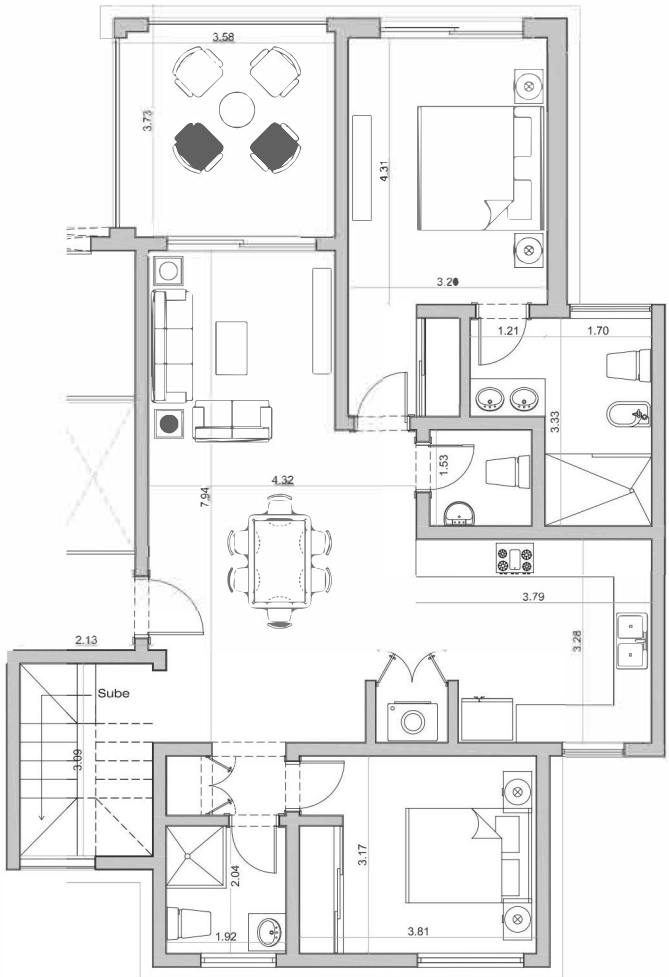
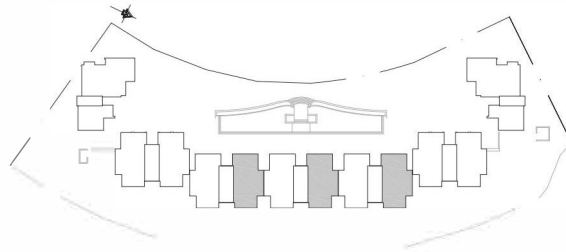
Total Area: 269.98m² · 2906sqft

Fase 2 · Building E

UNIT

E303, E305, E307

Net Area	125.39m ² · 1349.19sqft
Common Areas	12.48m ² · 134.28sqft
Roof Terrace	132.11m ² · 1422sqft
Total	269.98m ² · 2906sqft



APT TYPE 18

No. of Bedrooms 2

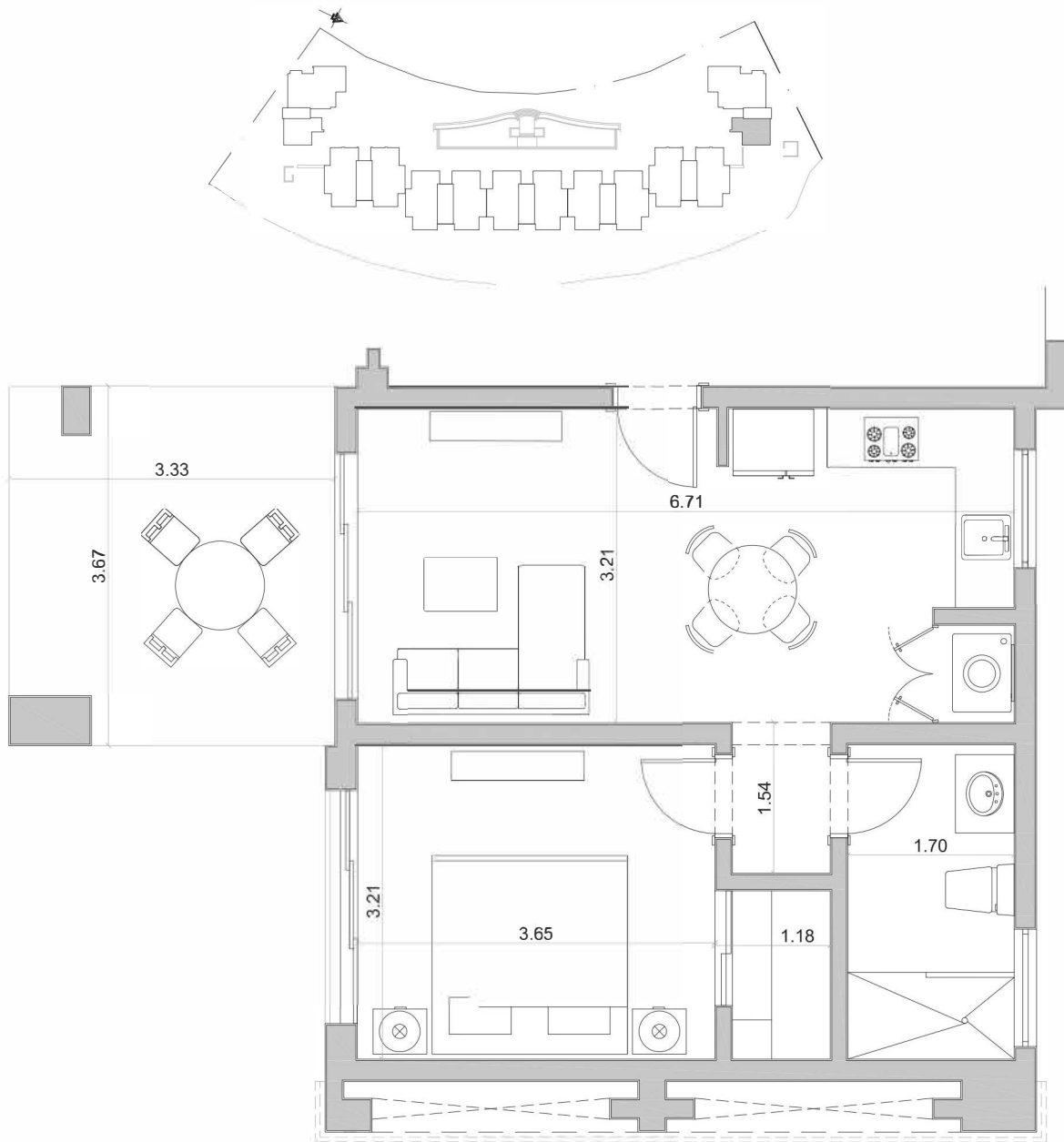
Total Area: 269.98m² = 2906sqft

Fase 2 • Building E

UNIT

E304, E306, E308

Net Area	125.39m ² = 1349.19sqft
Common Areas	12.48m ² = 134.28sqft
Roof Terrace	132.11m ² = 1422sqft
Total	269.98m ² = 2906sqft



APT TYPE 19

No. of Bedrooms 1

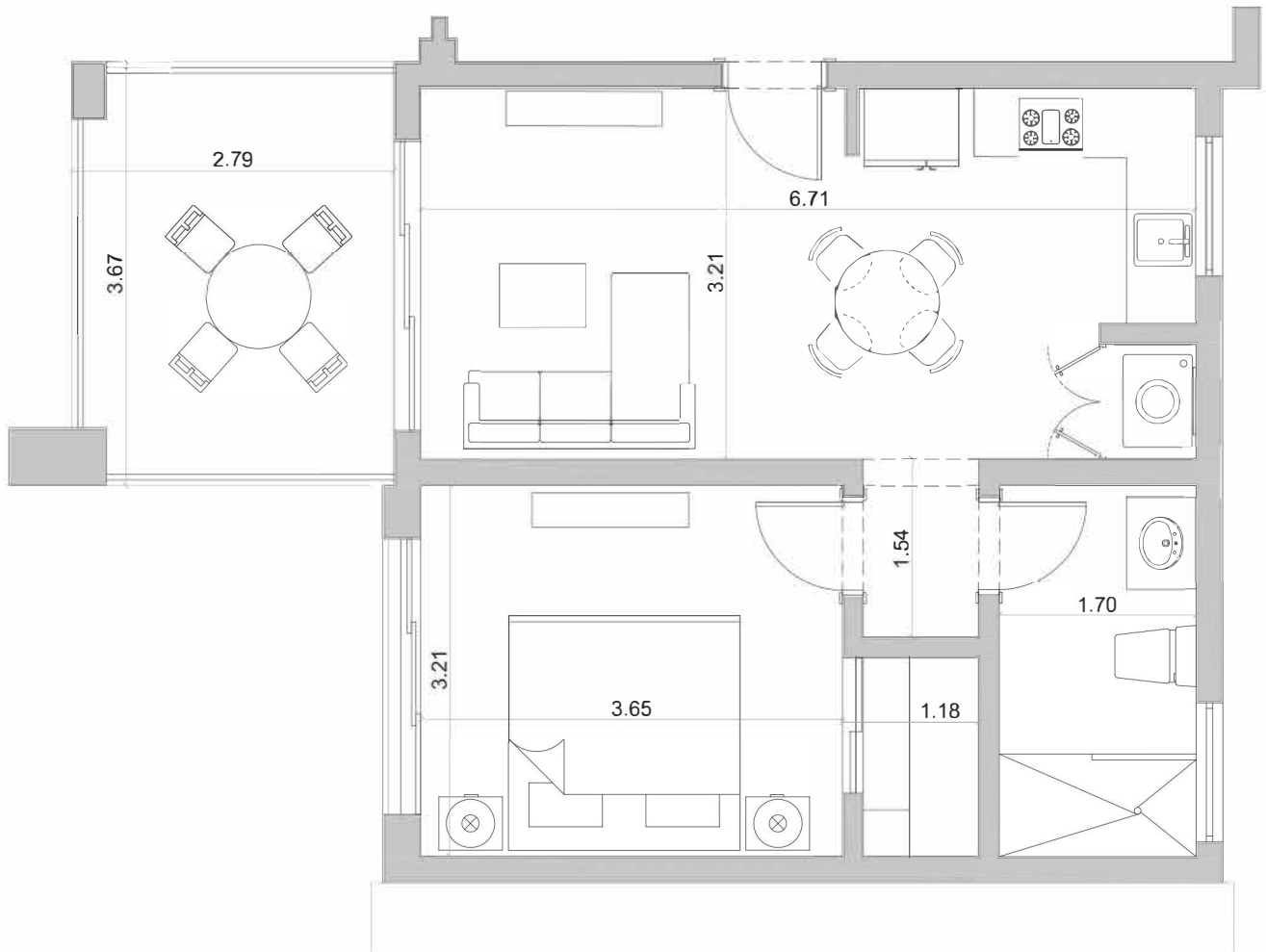
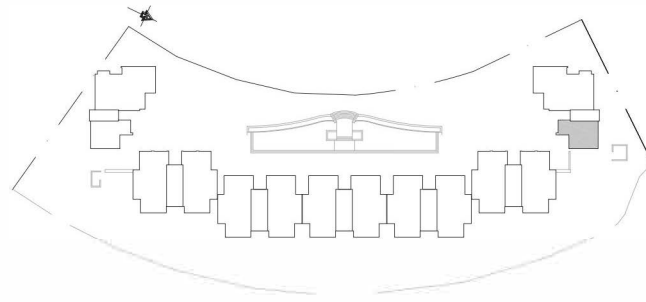
Total Area: 70.87m² · 762.56sqft

Fase 2 · Building F

UNIT

F102

Net Area	63.10m ² · 679sqft
Common Areas	7.77m ² · 83.60sqft
Total	70.87m ² · 762.56sqft



APT TYPE 20

No. of Bedrooms 1

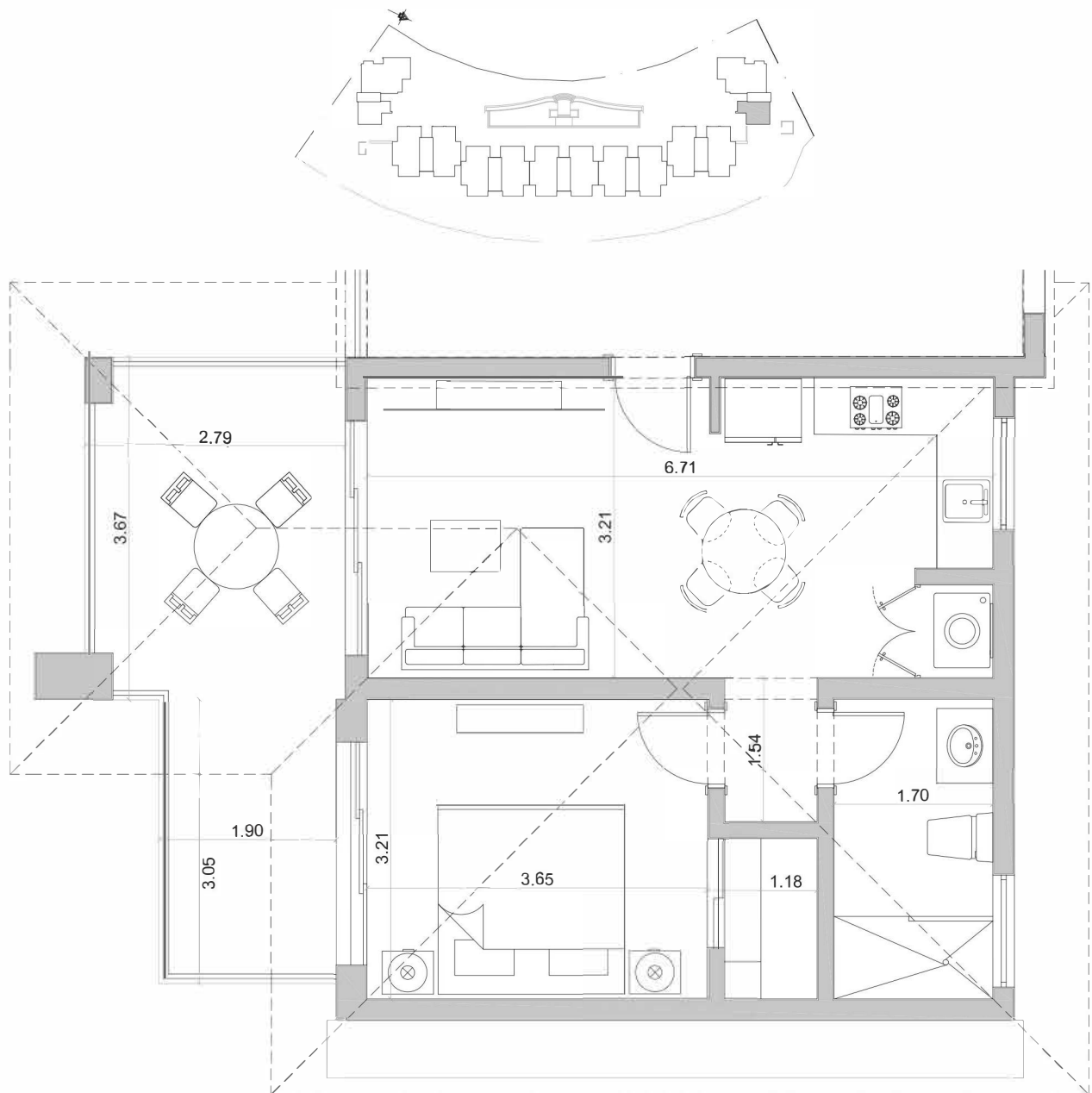
Total Area: 69.17m² · 744.27sqft

Fase 2 · Building F

UNIT

F202

Net Area	61.40m ² · 660.66sqft
Common Areas	7.77m ² · 83.61sqft
Total	69.17m ² · 744.27sqft



APT TYPE 21

No. of Bedrooms 1

Total Area: 74.65m² · 803.23sqft

Fase 2 · Building F

UNIT

F302

Net Area	66.88m ² · 719.63sqft
Common Areas	7.77m ² · 83.61sqft
Total	74.65m ² · 803.23sqft