

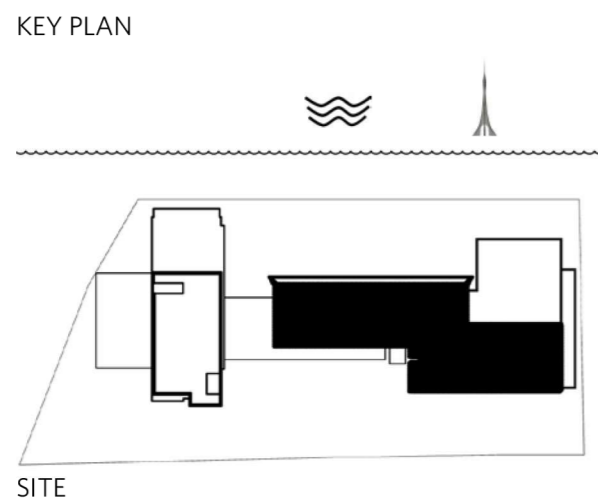
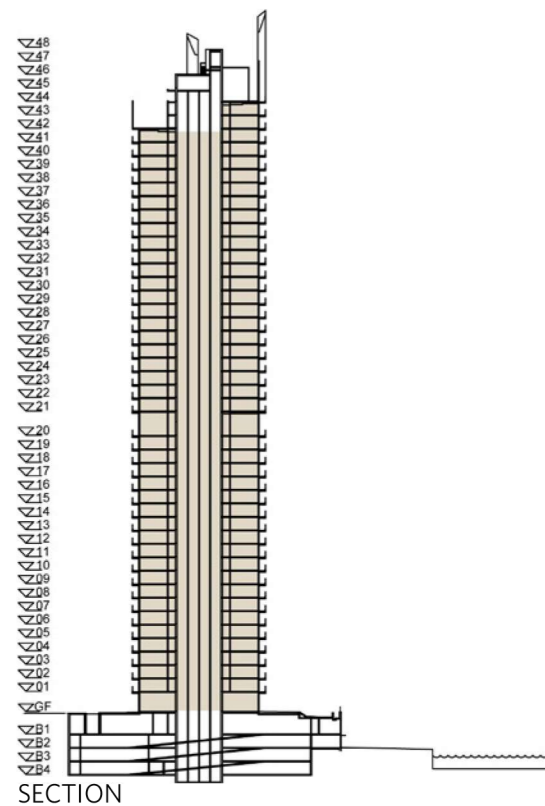
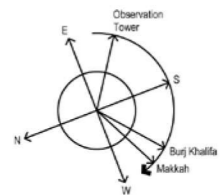
PALACE RESIDENCES DUBAI CREEK HARBOUR

TOWER 1

1 BEDROOM

UNIT 9 | LEVEL 1 TO 43

APARTMENT AREA	612.14 SQ.FT.	56.87 SQ.M.
BALCONY AREA	84.07 SQ.FT.	7.81 SQ.M.
TOTAL AREA	696.21 SQ.FT.	64.68 SQ.M.



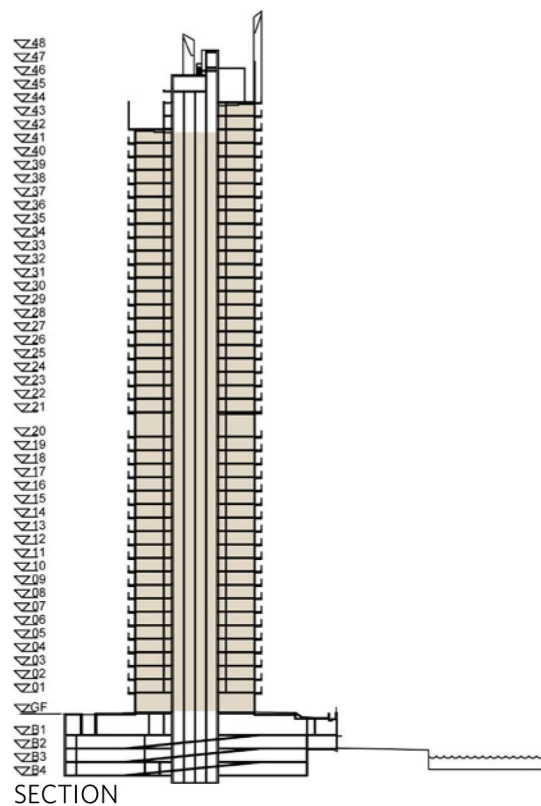
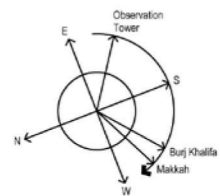
PALACE RESIDENCES DUBAI CREEK HARBOUR

TOWER 1

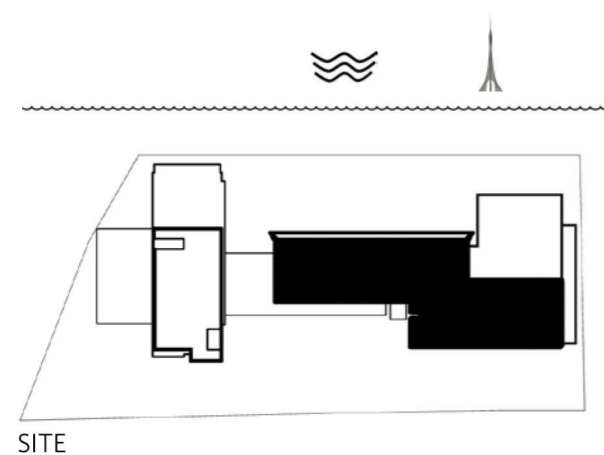
2 BEDROOM - TYPE A

UNIT 6 | LEVEL 1 TO 43

APARTMENT AREA	953.25 SQ.FT.	88.56 SQ.M.
BALCONY AREA	148.97 SQ.FT.	13.84 SQ.M.
TOTAL AREA	1102.22 SQ.FT.	102.40 SQ.M.



KEY PLAN



SITE



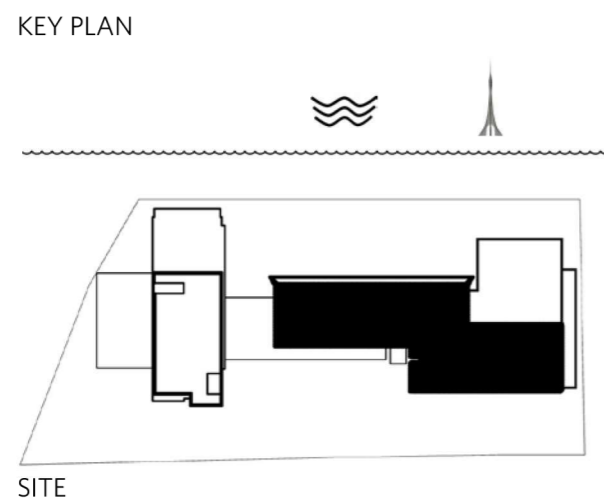
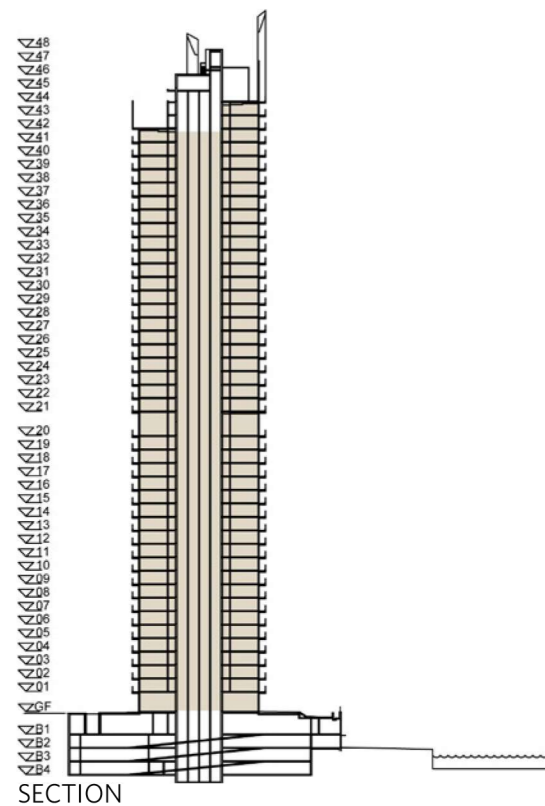
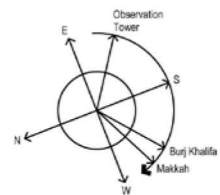
PALACE RESIDENCES DUBAI CREEK HARBOUR

TOWER 1

2 BEDROOM - TYPE B

UNIT 10 | LEVEL 1 TO 43

APARTMENT AREA	953.79 SQ.FT.	88.61 SQ.M.
BALCONY AREA	220.66 SQ.FT.	20.50 SQ.M.
TOTAL AREA	1174.45 SQ.FT.	109.11 SQ.M.



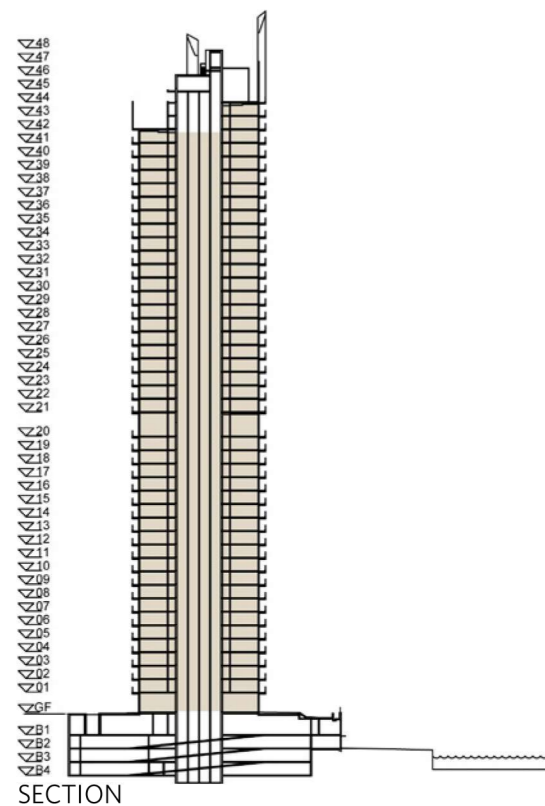
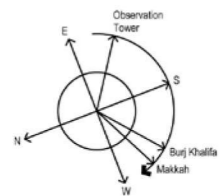
PALACE RESIDENCES DUBAI CREEK HARBOUR

TOWER 1

3 BEDROOM

UNIT 4 | LEVEL 1 TO 43

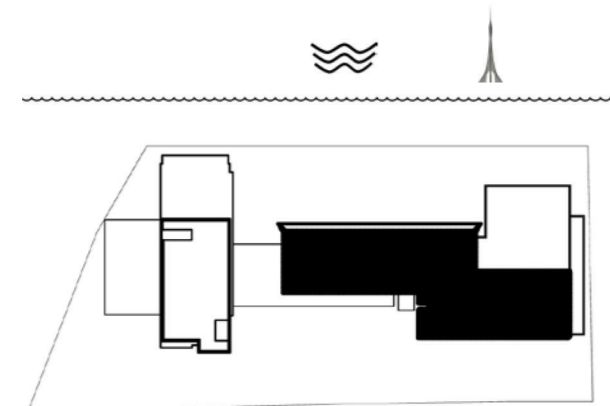
APARTMENT AREA	1541.28 SQ.FT.	143.19 SQ.M.
BALCONY AREA	269.85 SQ.FT.	25.07 SQ.M.
TOTAL AREA	1811.13 SQ.FT.	168.26 SQ.M.



SECTION



KEY PLAN



SITE



PALACE RESIDENCES DUBAI CREEK HARBOUR

TOWER 1

4 BEDROOM

UNIT 5 | LEVEL 40 TO 43

APARTMENT AREA	1894.34 SQ.FT.	175.99 SQ.M.
BALCONY AREA	448.86 SQ.FT.	41.70 SQ.M.
TOTAL AREA	2343.20 SQ.FT.	217.69 SQ.M.

